

Adding the Prefix inter- (Meaning 'between' or 'among')

What do you notice about these words?



international



internet



intergalactic

This week we are looking at adding the prefix **inter-** to words...

interact

interfere

intercity

international

intermediate

internet

intergalactic

interrupt

intervene

interlude

Which prefix do these words have in common?

How does that prefix affect how the word is spelt?

How does that prefix affect the meaning of the words?

The prefix **inter-** means 'between' or 'among'.

Here are this week's spellings to practise.

interact

intergalactic

intermediate

interlude

interfere

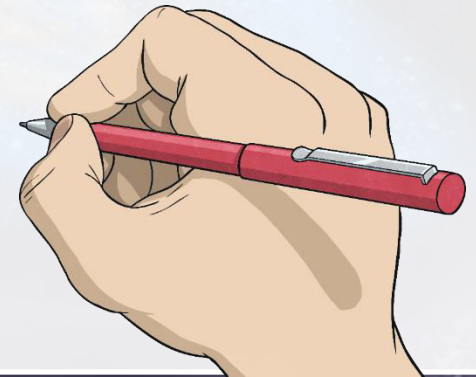
international

internet

interrupt

intervene

intercity



A large, glowing blue and orange galaxy is the central focus of the image. The galaxy has a bright orange and yellow core, surrounded by a blue and white outer ring. The background is a dark, starry space with various celestial bodies and nebulae. The twinkl logo is centered on the galaxy.

twinkl