

Word Families Based on Common Words, Showing How Words Are Related in Form and Meaning



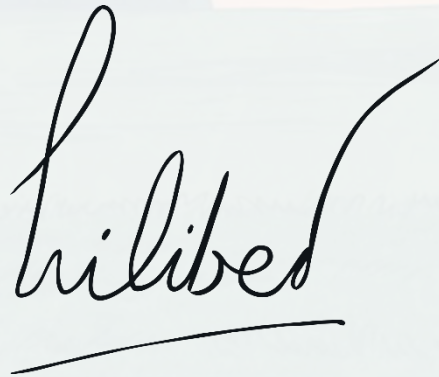
twinkl

This week we are looking at words which belong to two different word families...

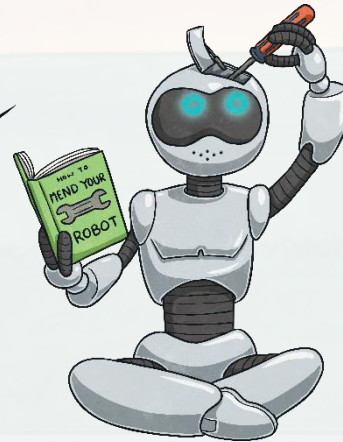
What do you notice about these words?



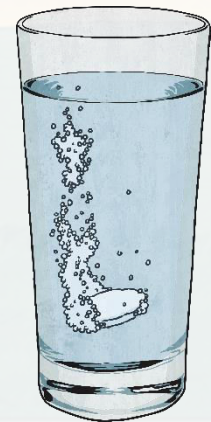
sign



signature



solve



dissolve

solve

solution

insoluble

dissolve

solvent

sign

signature

assign

design

signal

Which word families do these words have in common?

How does that word family affect how the word is spelt?

How does that word family affect the meaning of the words?

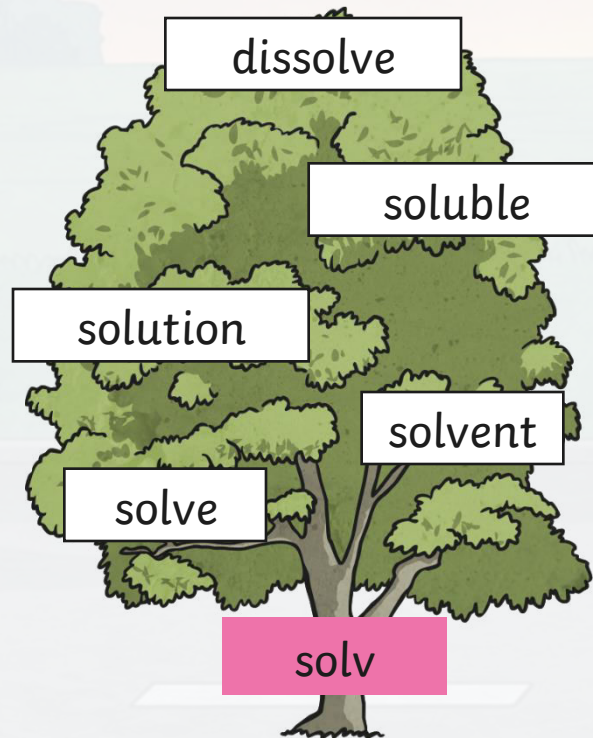
‘solv’, which is often associated with words that mean **‘to loosen’** or **‘to release’**.

‘sign’, which is often associated with words that mean **‘to seal’** or **‘to mark’**.

Look at these 'solv' words

Do you know what all your words mean?

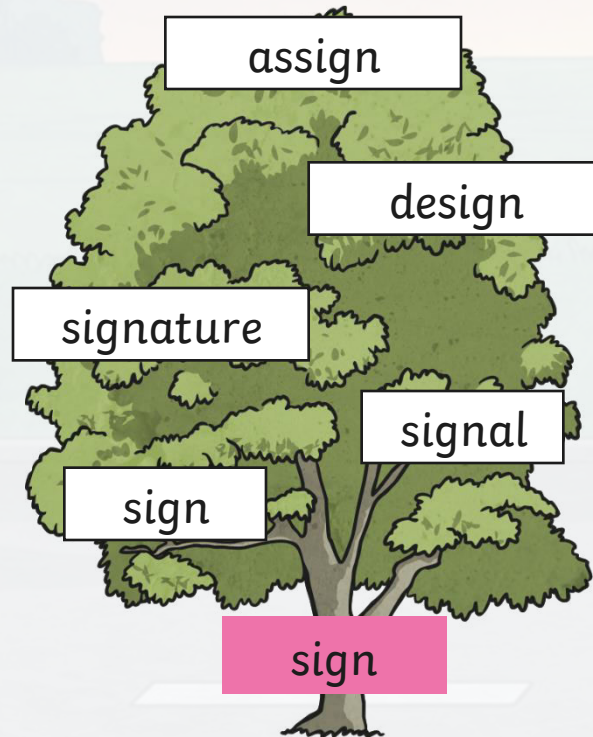
These will be your '**solv**' spelling words for this week...



Look at these 'sign' words

Do you know what all your words mean?

These will be your '**sign**' spelling words for this week...



Here are this week's spellings to practise.

solve

sign

solution

signature

insoluble

assign

dissolve

design

solvent

signal

