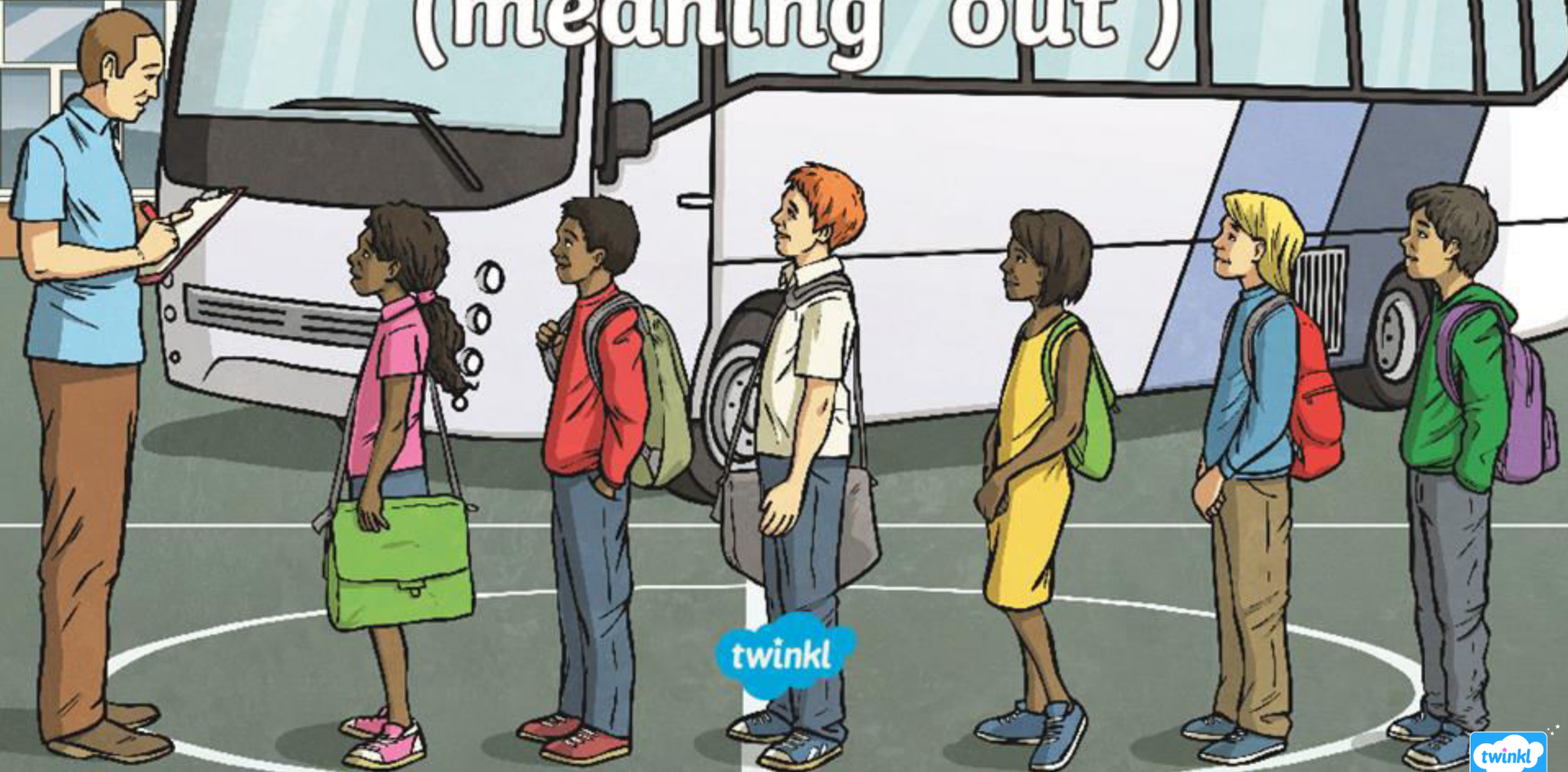


# Adding the prefix ex- (meaning 'out')



This week we are looking at adding the prefix *ex-* to words...

What do you notice about these words?



exit



explode



exchange



exit

extend

explode

excursion

exchange

export

exclaim

expel

external

exterior

Which prefix do these words have in common?

How does that prefix affect how the word is spelt?

How does that prefix affect the meaning of the words?

**The prefix *ex-* means 'out'.**



Here are this week's spellings to practise.

exit

extend

explode

excursion

exchange

export

exclaim

expel

external

exterior





twinkl