

This week, we are going to look at words with endings that sound like /shuhl/.



The sound /shuhl/ can be made in two ways.
Can you think of any words that end in the /shuhl/ sound? How is the sound spelt?

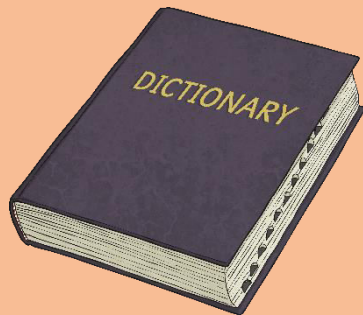
The two many ways to make a /shuhl/ sound are...

'-cial' as in **special**

'-tial' as in **martial**

For this week's spellings, we are going to concentrate on words where the /shuhl/ sound is spelt using '-cial'.

In the next three minutes, how many -cial ending words can you think of? Use a dictionary if you need to.



Write them down and discuss them with a partner.

Do you notice anything that they all have in common?



Start

End

What -cial words did you think of? Did you write down any of your spelling words for this week?



official



special



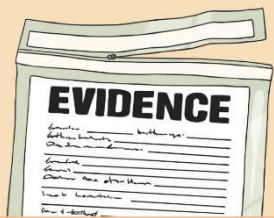
artificial



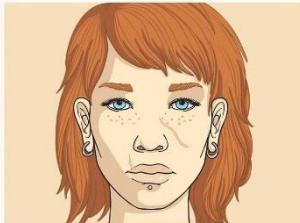
social



racial



crucial



facial



beneficial



superficial



antisocial

Did you notice anything about all of the -cial words?

All of the words have a vowel letter (a,e,i,o or u) before the /shuhl/ sound. Usually, this means that the sound is spelt using '-cial'.



Here are your spelling words for this week.

They all have a /shuhl/ spelt with 'cial' after a vowel letter.

Use a dictionary to find the meaning of each of these words. Write the definitions.

Week 1
Words with endings which sound like /shuhl/ after a vowel letter

official

special

artificial

social

racial

crucial

facial

beneficial

superficial

antisocial

twinkl.co.uk

