

# Bear Facts



twinkl

# American Black Bear

- American black bears are usually black or brown.
- They eat mainly berries, nuts, grasses and insects.
- Most American black bears hibernate during the cold winter months.
- They are very good at climbing trees and swimming.
- They are usually shy and easily frightened.
- They can run up to 35 miles per hour.



That's as fast as a car!

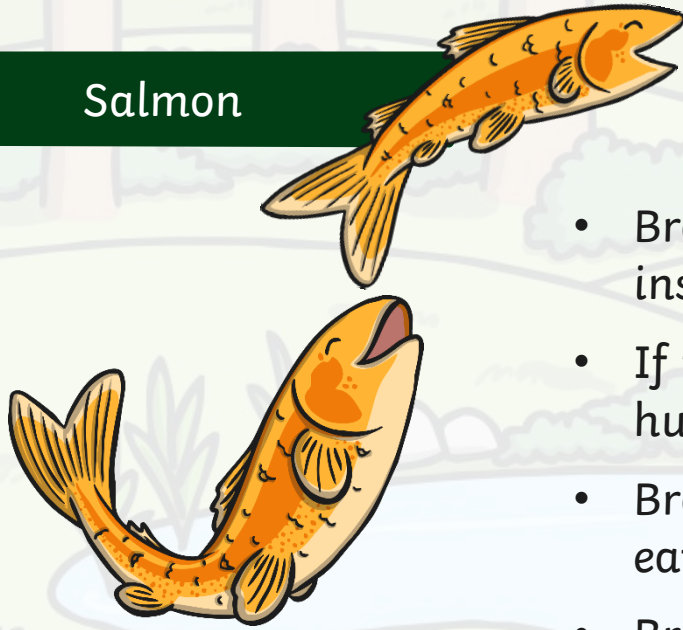
# Brown Bear

- Brown bears live in lots of different countries around the world.
- They live in mountains, forests and meadows.
- Brown bears have super strong shoulder muscles. This helps them to dig up roots and tear apart logs to find food. They can even move rocks!
- They use their sharp claws to dig through hard soil when making dens.



# Brown Bear

## Salmon



- Brown bears like to eat grass, fruit, insects and the roots of plants.
- If they are hungry enough they will hunt small animals.
- Brown bears that live near rivers like to eat fish, particularly salmon.
- Brown bears hibernate in their dens all winter. They don't even wake up when they have their babies!

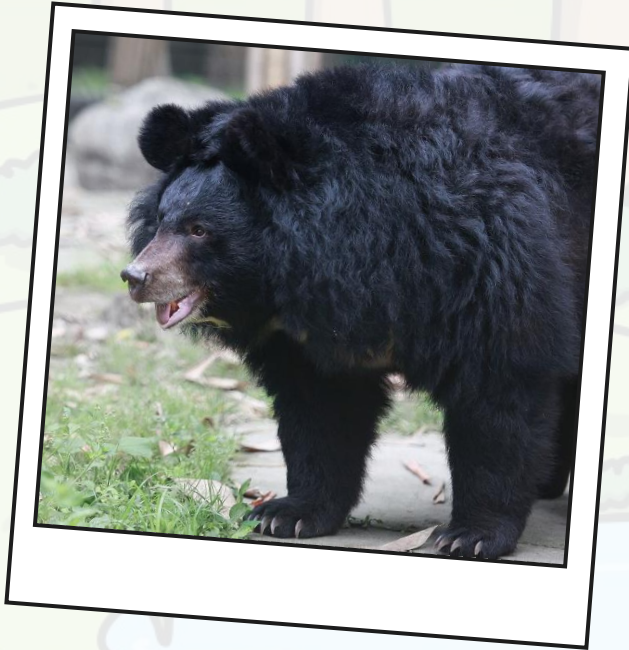
# Polar Bear

- Polar bears live in the Arctic.
- They are the biggest type of bear.
- Polar bears are excellent swimmers.
- Polar bears are meat eaters.
- The bottoms of polar bears' paws are covered with fur to keep them warm and stop them from slipping on the snow and ice.
- Polar bears don't hibernate.



When a male polar bear stands on its hind legs, it can be as tall as 3 metres!

# Moon Bear



- The moon bear lives in Asia.
- They have a white patch of fur on their chest shaped like a crescent moon.
- Moon bears have large ears and the fur around their neck and shoulders is extra long and fluffy.
- Moon Bears like to spend time in the trees. They even like to sleep in trees!
- They like to eat plants, berries, insects and small animals.

Moon bears are very fierce.

# Spectacled Bear

- The spectacled bear lives in South America.
- They live in forests.
- The pattern of the fur on their face makes it look like they are wearing spectacles!
- The spectacled bear likes to eat plants, berries, grasses, fruits and small animals.
- These bears like to climb up in the trees to eat and sleep.

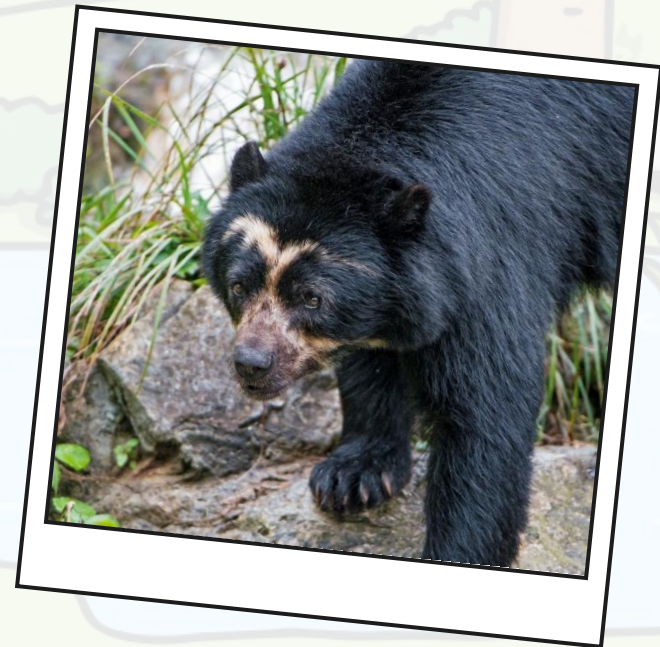


Photo courtesy of tambako (@flickr.com) - granted under creative commons licence – attribution

# Giant Panda

- Pandas only live in China.
- They are very good at climbing trees.
- There are only about 1000 pandas living in the wild. This is because people are cutting down the forests where they live.
- Pandas eat mainly bamboo. They have to eat lots of it every day!



Pandas have special paws that help them hold onto the bamboo.



# Sloth Bear

- The sloth bear carries its cubs on its back.
- Sloth bears will eat fruit and flowers but their favourite food are termites, which they suck up like a vacuum cleaner!
- Some people call them honey bears as they climb trees to reach honeycomb to eat.
- Sloth bears have very shaggy fur.
- The sloth bear is nocturnal.



Termites



# Sun Bear

- Sun bears live in the tropical rainforests of Asia.
- The sun bear is the smallest type of bear.
- Sun bears like to eat lizards, small birds, small animals, insects and honey.
- They have a yellow mark on their chests.
- They have a long tongue which is perfect for slurping honey out of bees' nests.
- Sun bears don't need to hibernate because they live in warm places.

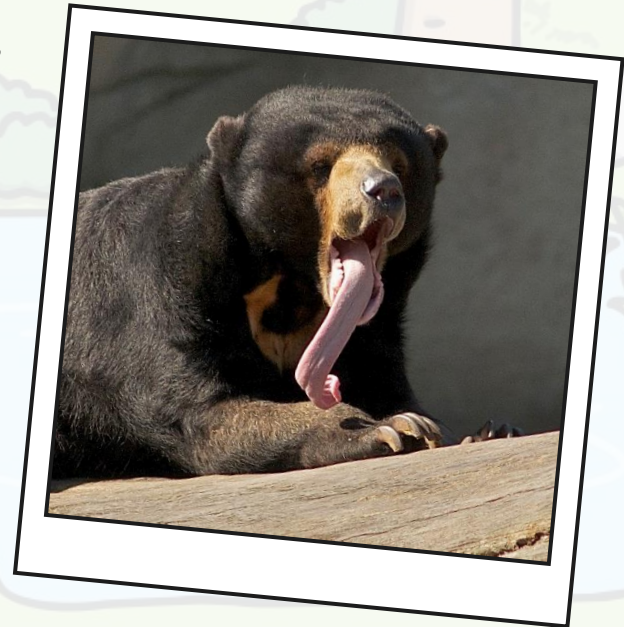
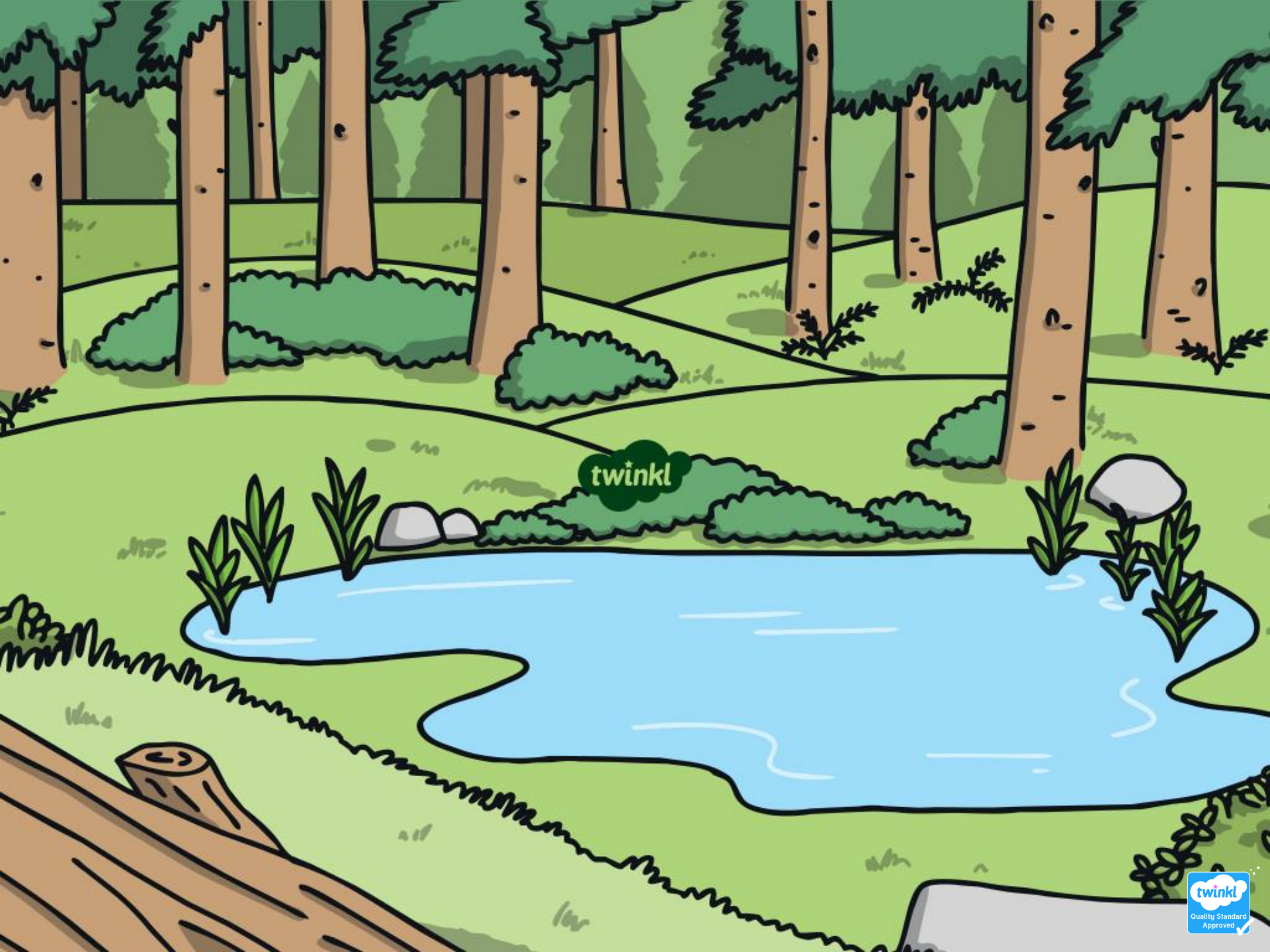


Photo courtesy of ucumari (@flickr.com) - granted under creative commons licence – attribution



twinkl