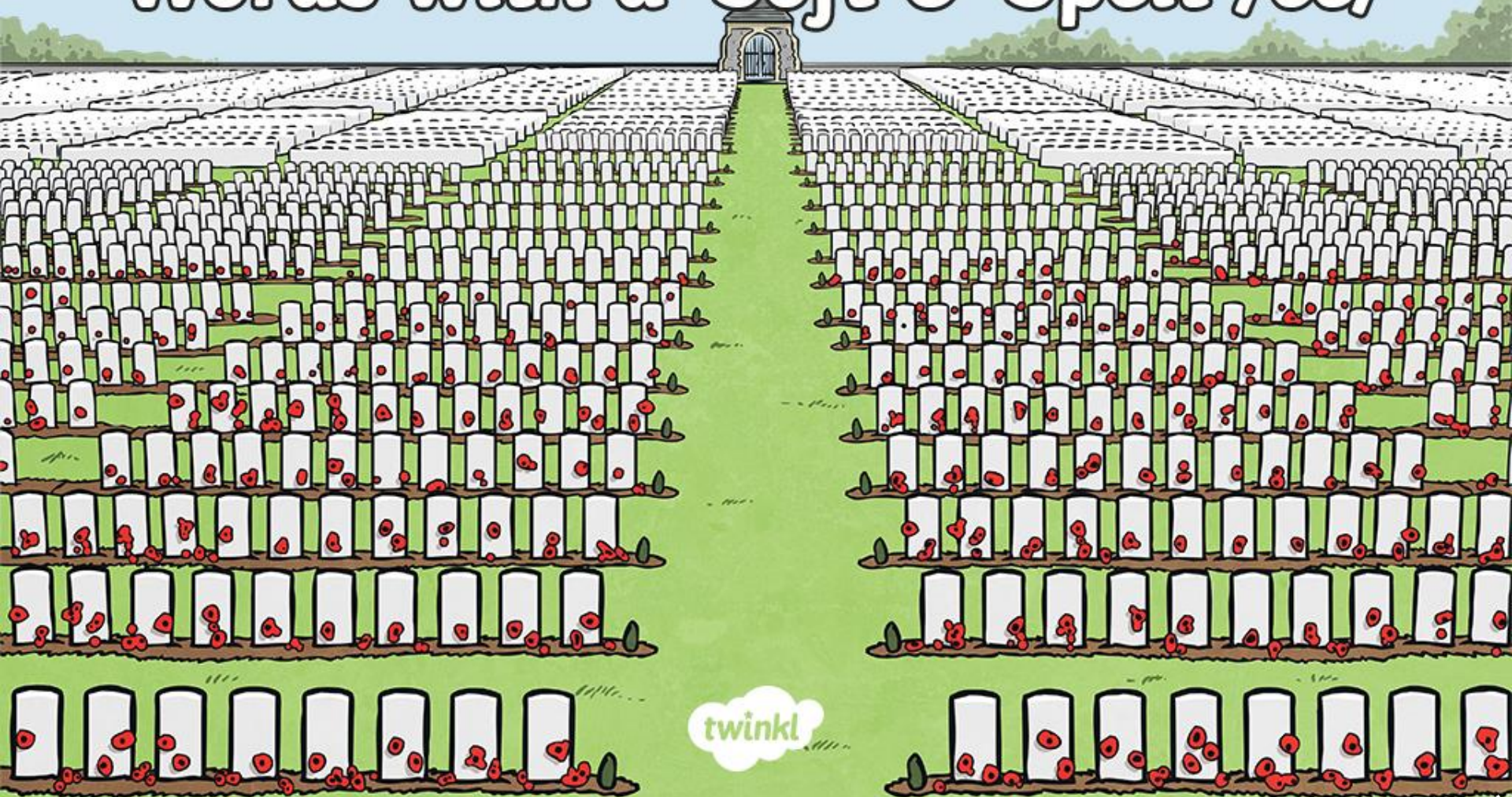


# Words with a 'Soft C' Spelt /ce/



This week, we are looking at words that have a 'soft c'.

A 'soft c' makes an /s/ sound. This can mean that some words that may sound like they start with an 's' can actually begin with the letter 'c'.

For example:



centre



celebrate



certificate

If the second letter of a word that starts with an /s/ sound is an 'e', 'i' or 'y', the sound **could** in fact be made with a 'c'!

Here are this week's spellings to practise.

cemetery

certificate

celebrate

necessary

deceased

December

sacrifice

hindrance

nuisance

prejudice

