

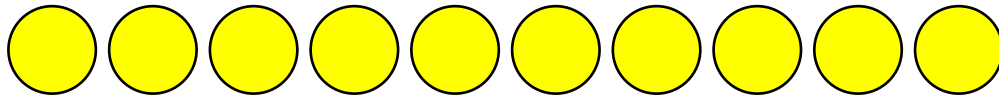
BONDS TO 10 AND 100



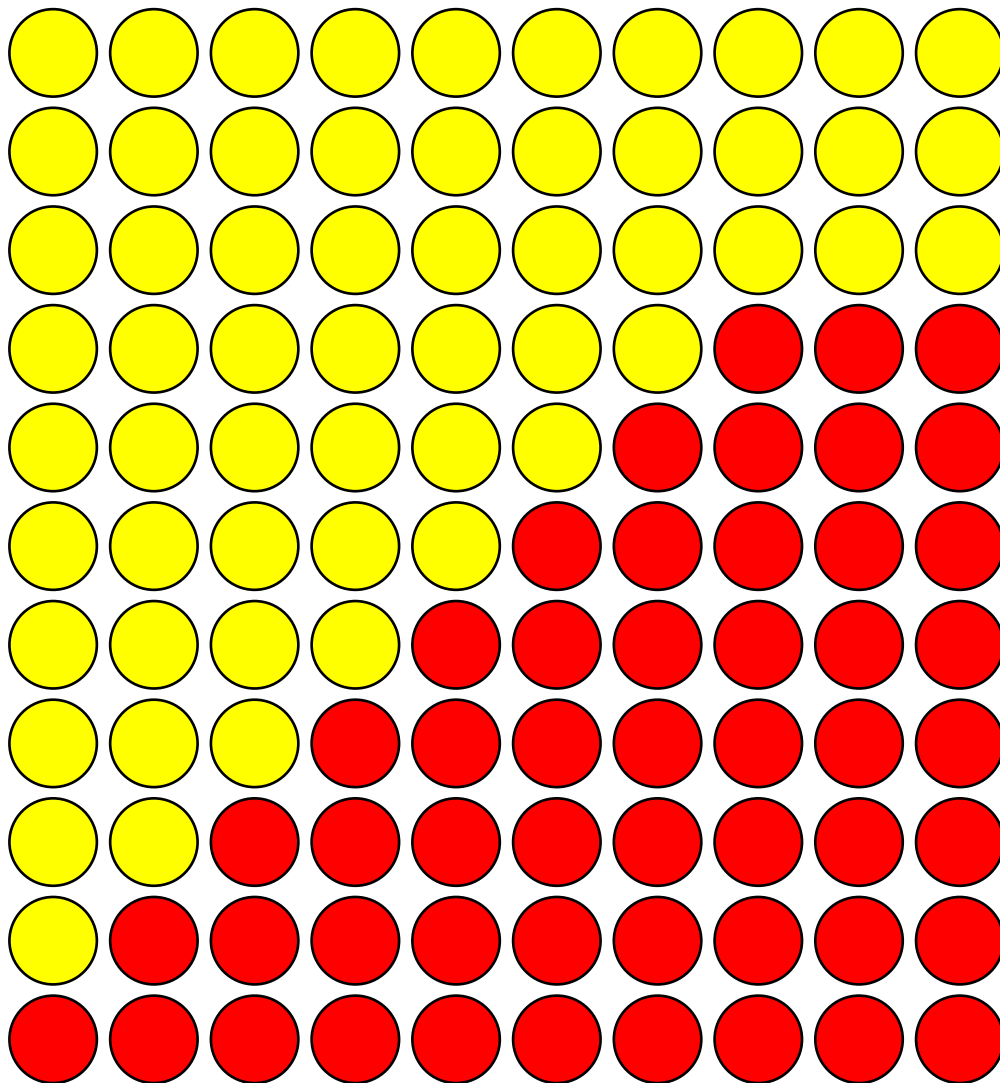
GET READY



Use counters to represent number bonds to 10



Use counters to represent number bonds to 10



$$10 + 0 = 10$$

$$9 + 1 = 10$$

$$8 + 2 = 10$$

$$7 + 3 = 10$$

$$6 + 4 = 10$$

$$5 + 5 = 10$$

$$4 + 6 = 10$$

$$3 + 7 = 10$$

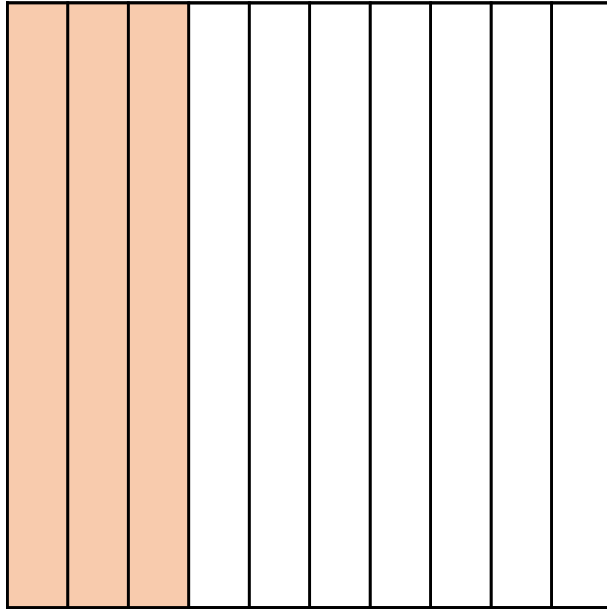
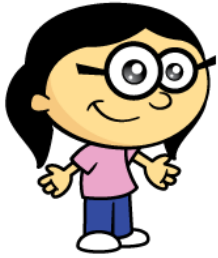
$$2 + 8 = 10$$

$$1 + 9 = 10$$

$$0 + 10 = 10$$

LET'S LEARN

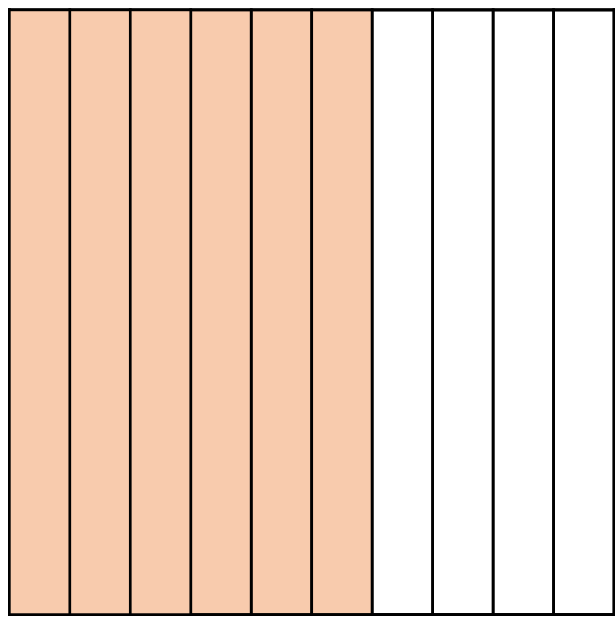
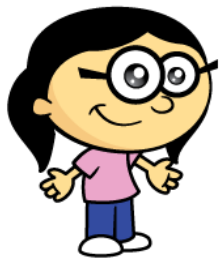




$$\boxed{3} + \boxed{7} = \boxed{10}$$

How many parts has Annie shaded? 3

How many parts has Annie **not** shaded? 7



Have a think



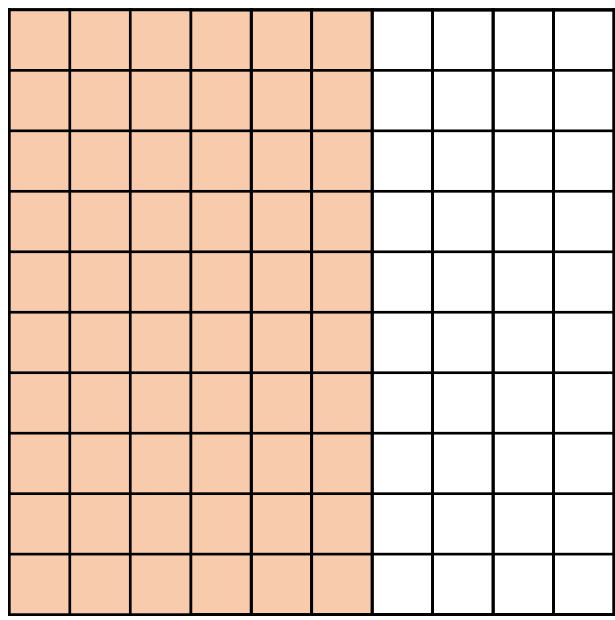
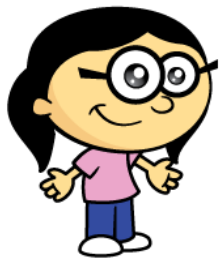
$$\boxed{6} + \boxed{4} = \boxed{10}$$

How many parts has Annie shaded?

6

How many parts has Annie **not** shaded?

4



Have a think



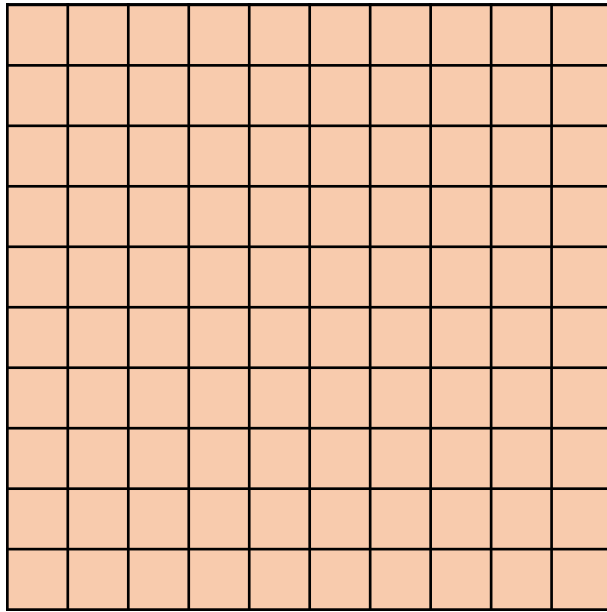
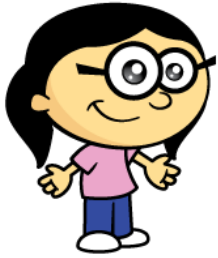
$$\boxed{60} + \boxed{40} = \boxed{100}$$

How many parts has Annie shaded?

60

How many parts has Annie **not** shaded?

40



Have a think



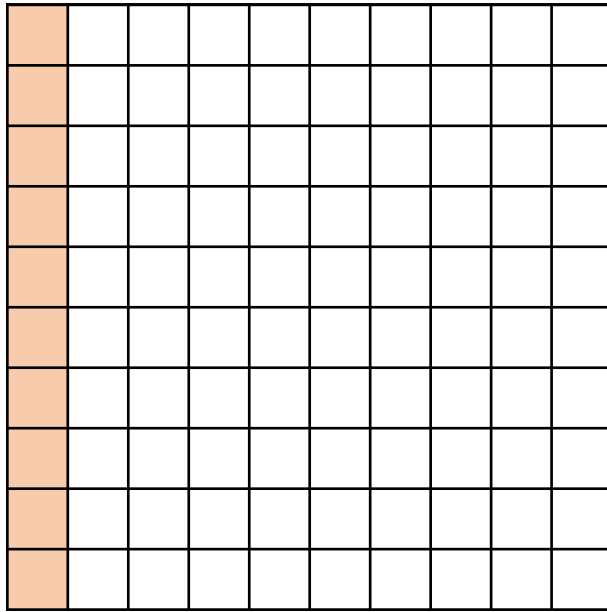
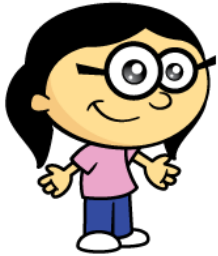
$$\boxed{100} + \boxed{0} = \boxed{100}$$

How many parts has Annie shaded?

100

How many parts has Annie **not** shaded?

0



Have a think



$$\boxed{10} + \boxed{90} = \boxed{100}$$

$$\boxed{90} + \boxed{10} = \boxed{100}$$

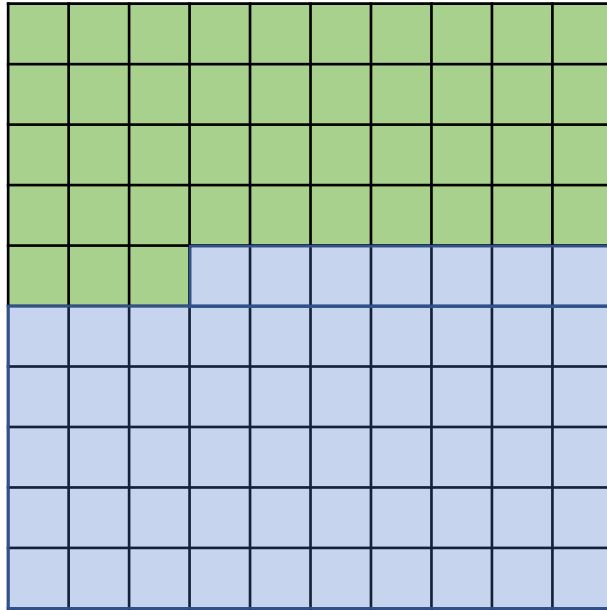
$$\boxed{100} - \boxed{90} = \boxed{10}$$

$$\boxed{100} - \boxed{10} = \boxed{90}$$

YOUR TURN

Have a go at worksheet 1
(Bonds to 100 – tens)



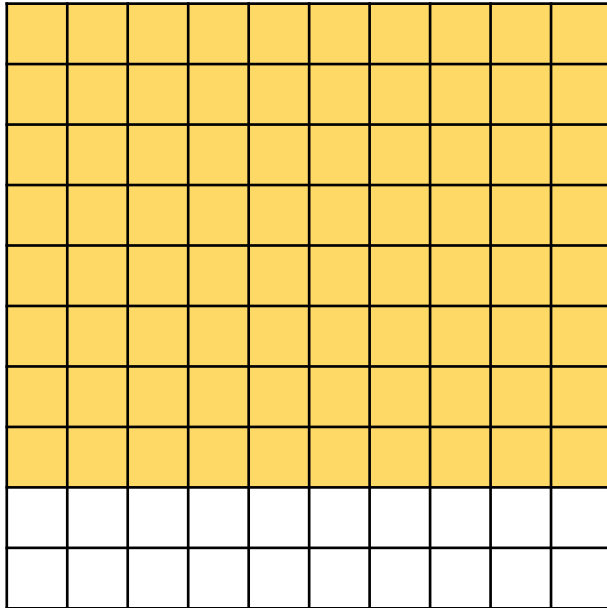


$$\boxed{43} + \boxed{57} = \boxed{100}$$

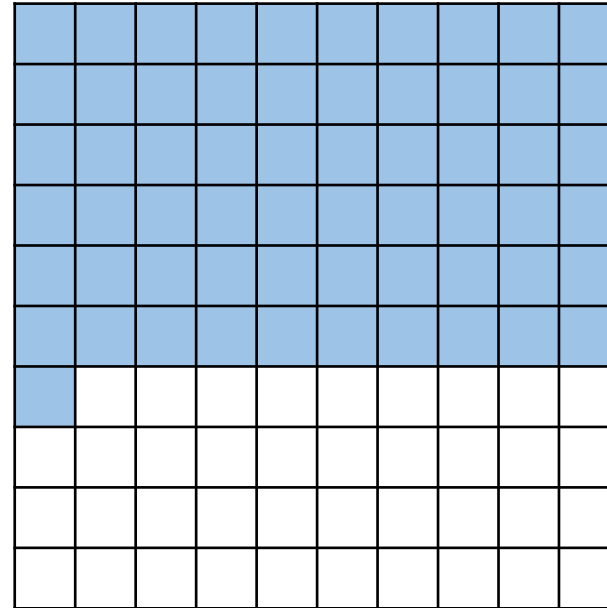
How many squares has Tommy shaded? 43

How many squares has Tommy **not** shaded? 57

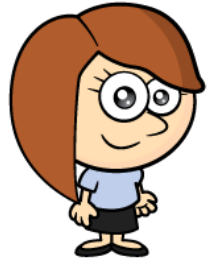
Have a think



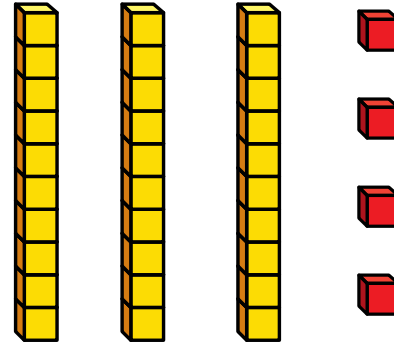
$$\boxed{80} + \boxed{20} = \boxed{100}$$



$$\boxed{61} + \boxed{39} = \boxed{100}$$



Here is my number!



So Amir's
number is 76

$$30 + 70 = 100$$

$$4 + 6 = 10$$

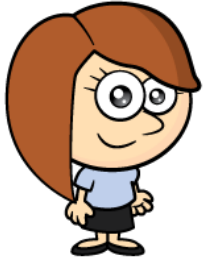
Our numbers add
together to make
100



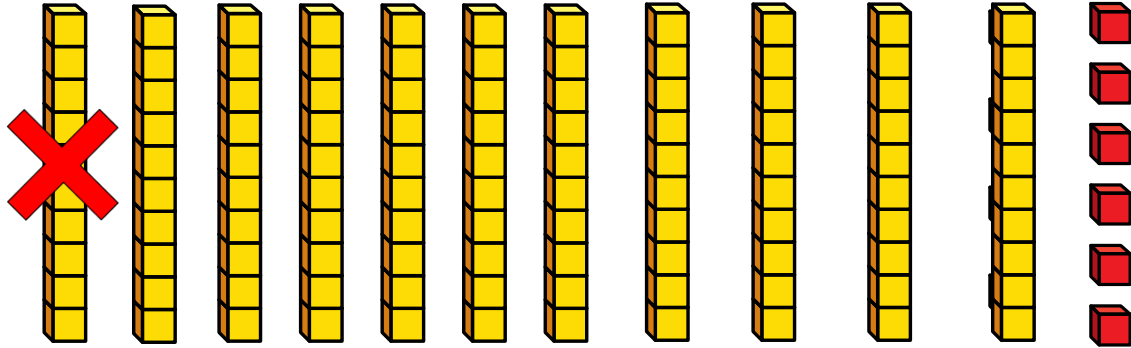
Do you agree with Tiny?

Have a think





Here is my number!

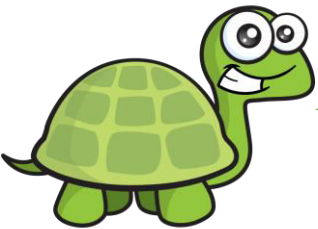


So Amir's number is 76

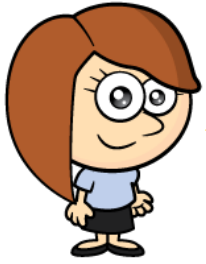
$$30 + \cancel{4} = 100$$

$$4 + 6 = 10$$

Our numbers add together to make 100

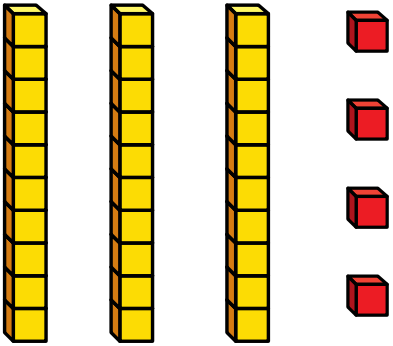


Do you agree with Tiny? 66

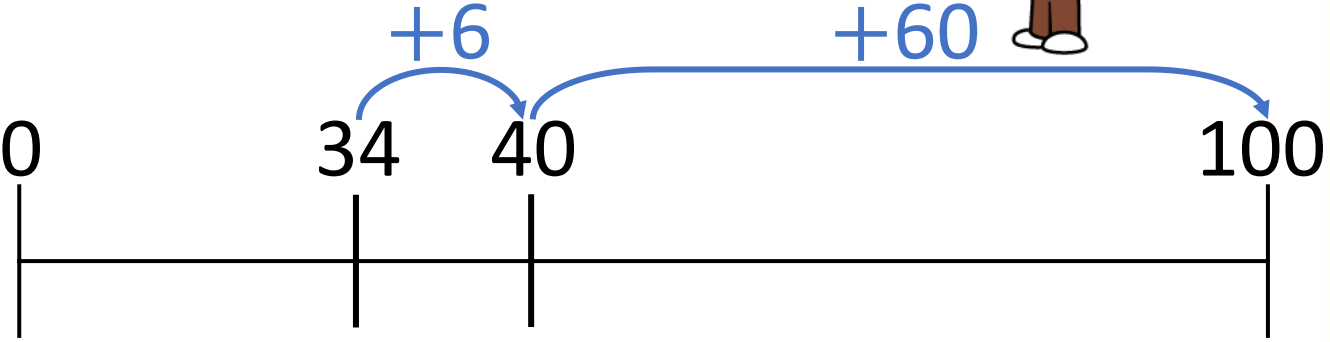
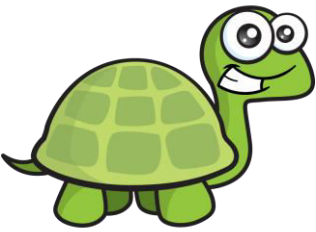


Here is my number!

$$34 + 66 = 100$$



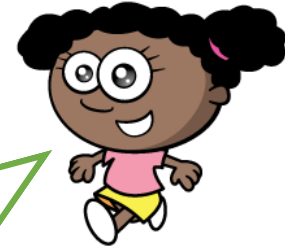
A number line might help Tiny



Dora, Whitney and Teddy are trying to work out the missing number.

$$39 + \square = 100$$

The missing number must be 61



The missing number must be 61



The missing number must be 61



Dora, Whitney and Teddy are trying to work out the missing number.

$$100 - 42 = \square$$

100 - 40 is
equal to 60



60 - 2 is equal
to 58



So 100 - 42 must
be equal to 58



YOUR TURN

Have a go at worksheet 2
(Bonds to 100 – tens and
ones)

