

# 'Mona Lisa' by Leonardo da Vinci

## Art Appreciation Activity

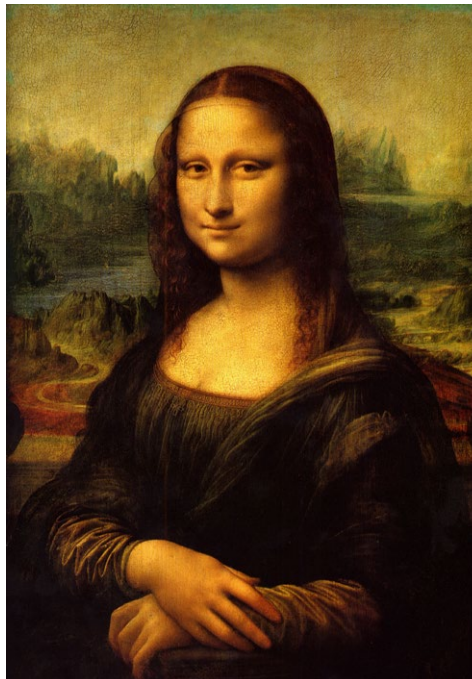
### Background Information

This painting was created by Leonardo da Vinci in the 16th century in Italy. He used oil paint on wood. Nobody knows exactly who the lady in the painting is and this has puzzled observers for many years. Some historians believe she may have been Lisa Giocondo, who was the wife of a rich Italian merchant at this time.

Take a look at the following labels. See if you can link them into the correct part of the painting using the clues given. Draw a line from each one to the correct part of the painting to do this.

Da Vinci included fine details in the painting such as the embroidery in the dress and a veil over the lady's head.

Leonardo worked very hard to make the painting feel deep and to give it a lot of background. This background turns blue and misty in the distance and gives the painting perspective.



Mona Lisa had no eyebrows. During the period when this painting was created it was fashionable for women to pluck or shave their eyebrows.

Da Vinci used a special technique known as sfumato to make lines in the painting smudge or blur into each other. Can you find an example of this in the painting? (Hint: Look at the mouth and lips)

## Questions

1. How do you think Mona Lisa feels in the painting? What expression does she have? Give reasons for your answer.

---

---

---

2. Imagine you are Mona Lisa and you are sitting for the painting. What are you looking at and what are you thinking about as Leonardo is painting the picture? Write ten sentences about this, giving as much detail as possible.

---

---

---

---

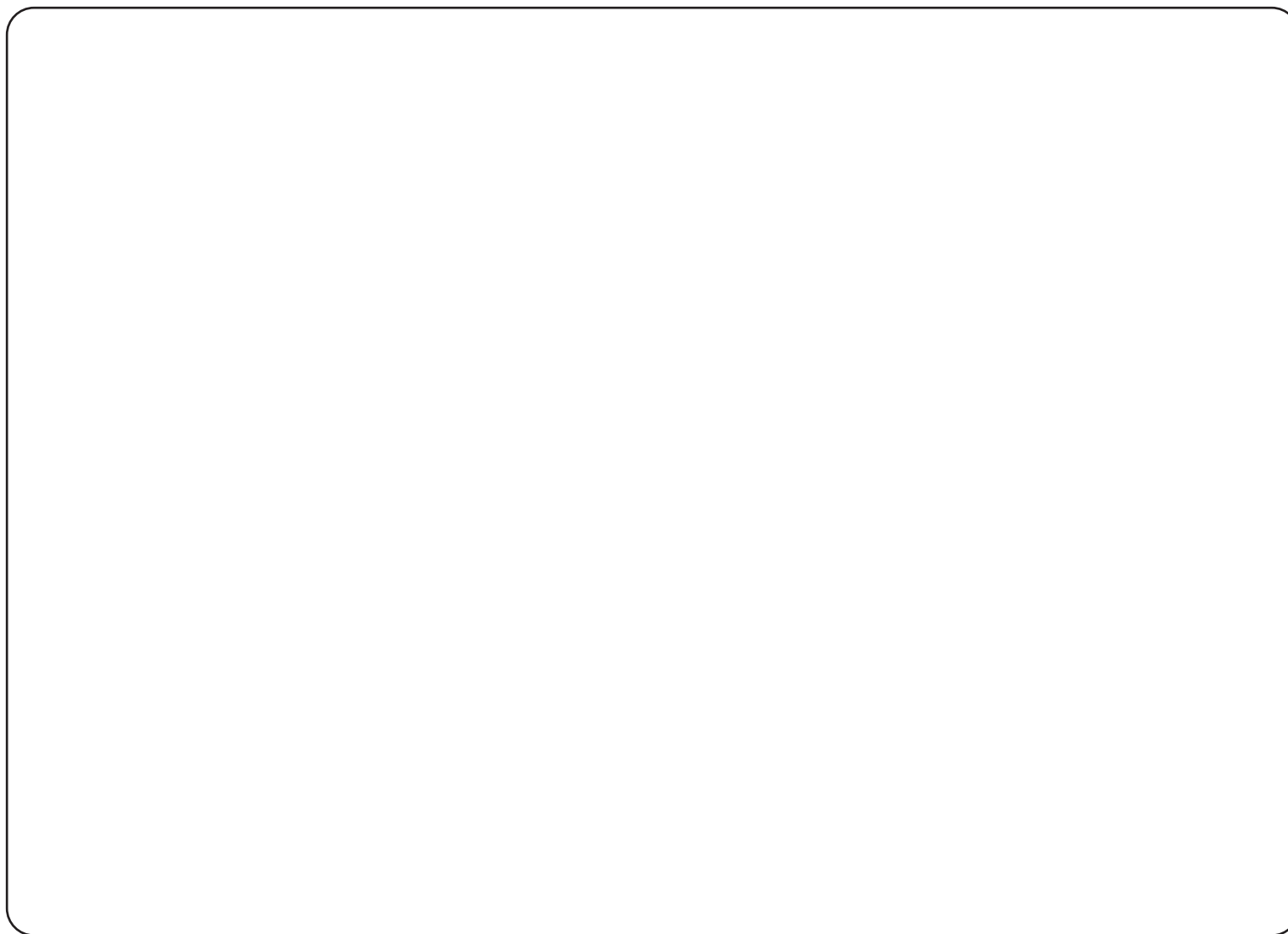
---

---

---

---

3. Now draw your own sketch of the painting using your memory only.



## Extra Challenge

Use the Internet or a dictionary to find the meaning for the following art term:

**Sfumato:**

---

Use the Internet to research three facts about the artist Leonardo da Vinci.

1. \_\_\_\_\_

2. \_\_\_\_\_

3. \_\_\_\_\_