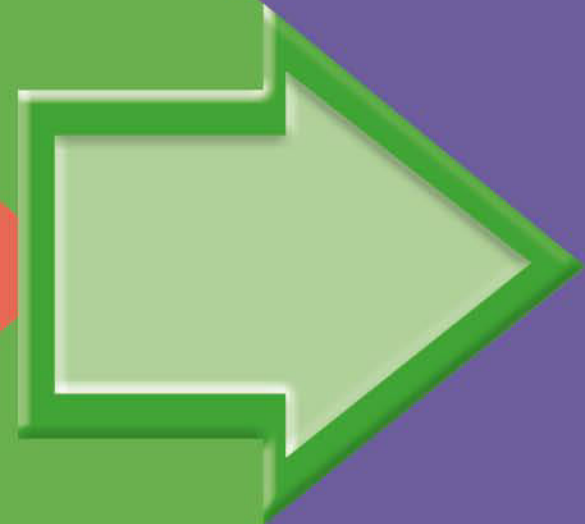


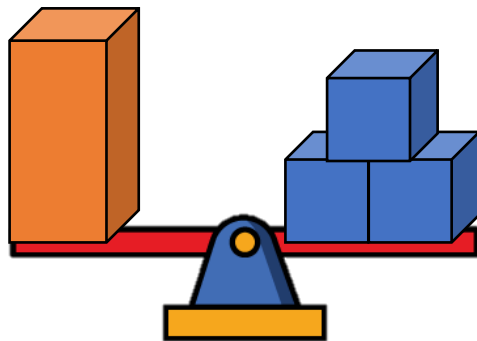
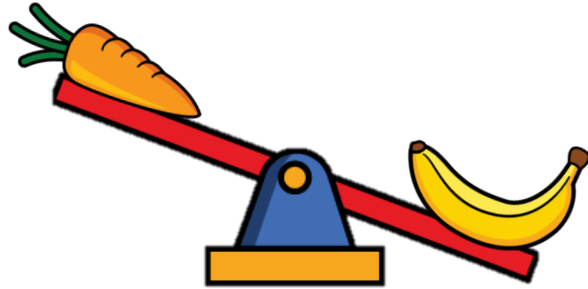
COMPARE MASS



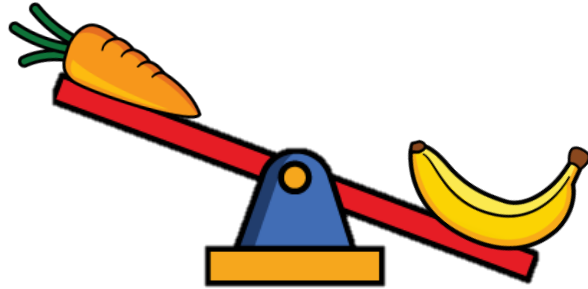
GET READY



What do you notice?

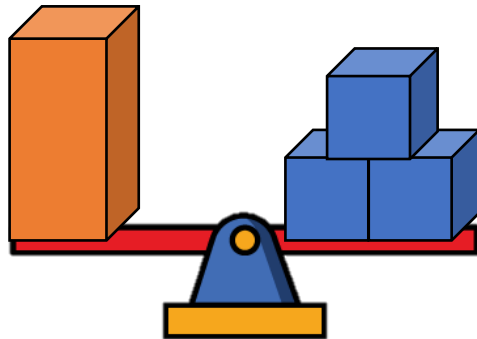


What do you notice?



The banana is heavier than the carrot.

The carrot is lighter than the banana.



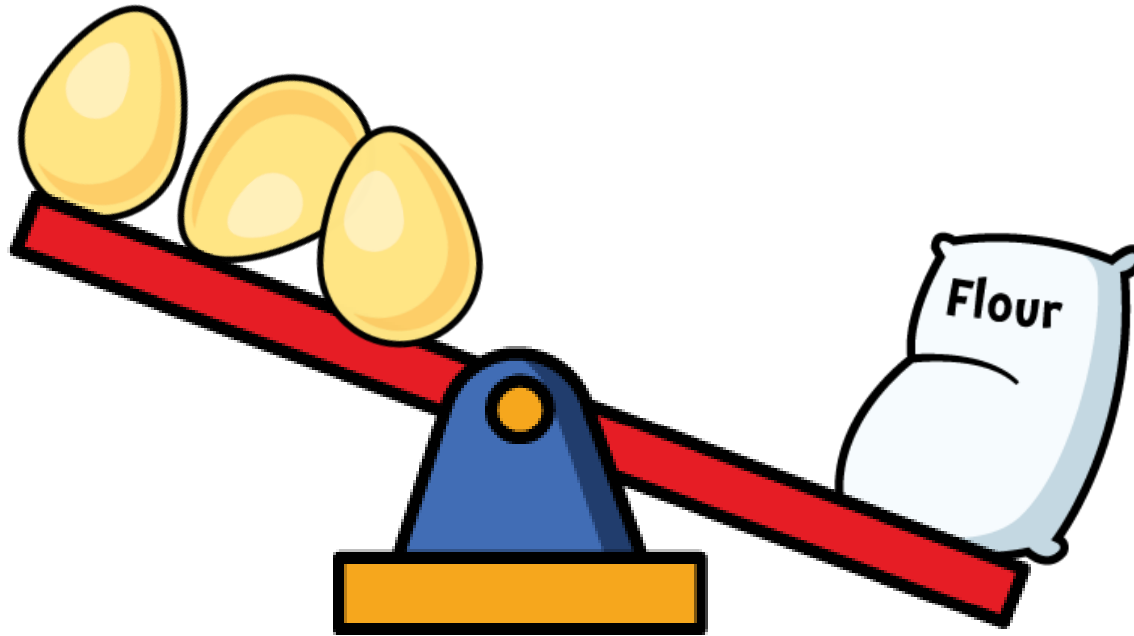
The scale is balanced.

The cuboid has a mass of 3 cubes.

LET'S LEARN

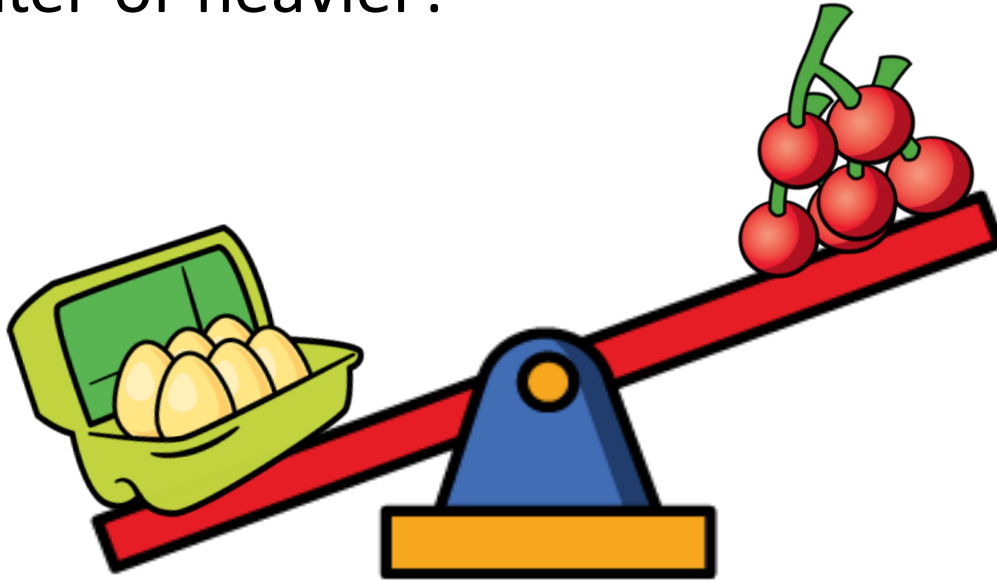


Lighter



Heavier

Lighter or heavier?



The eggs are the cherries.

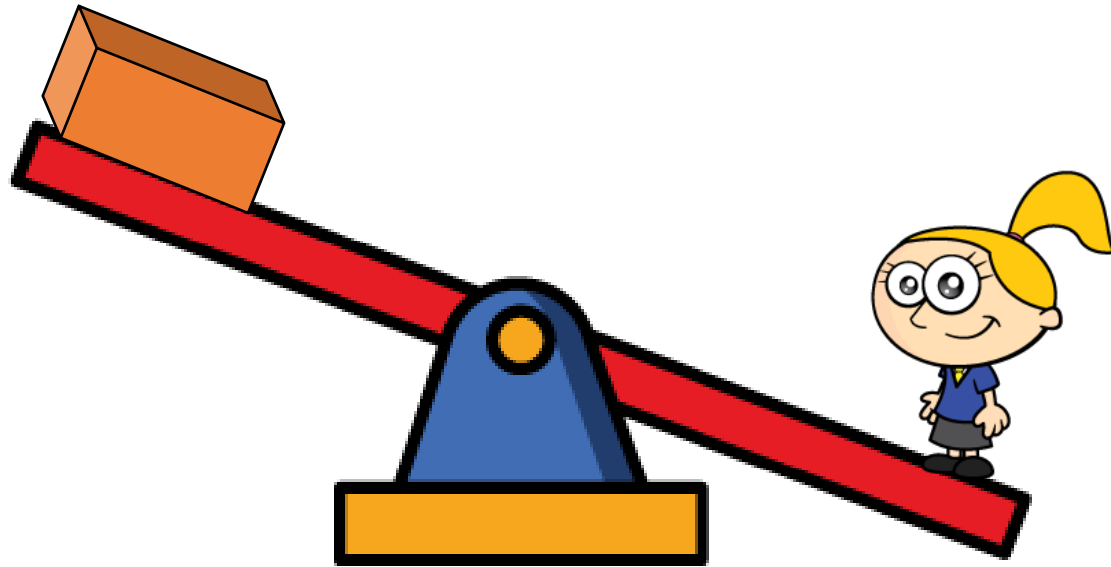
The cherries are the eggs.

YOUR TURN

Have a go at questions 1 and 2 on the worksheet

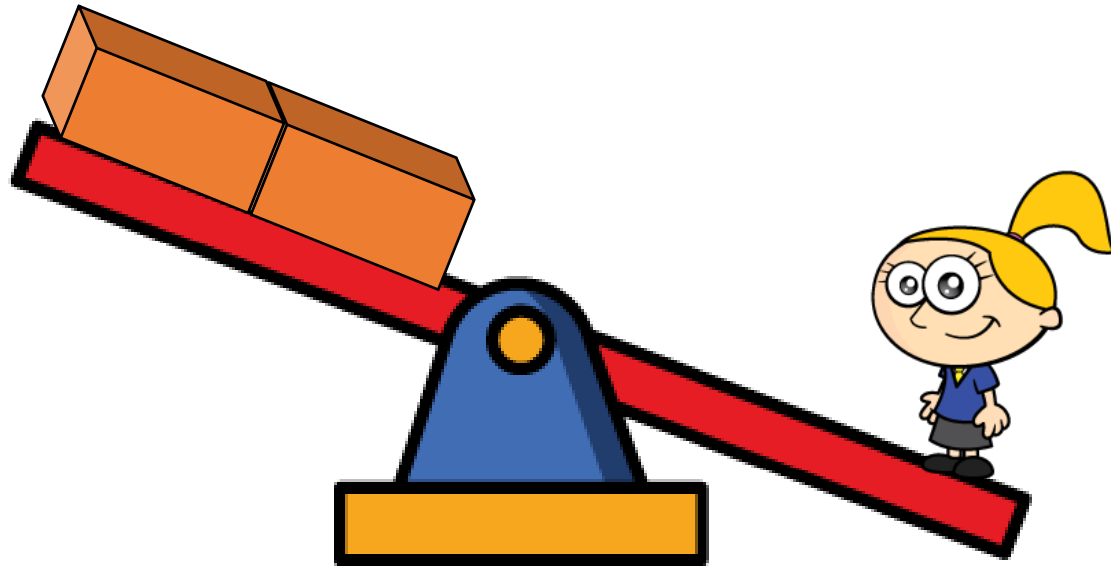


How many blocks will balance Eva?



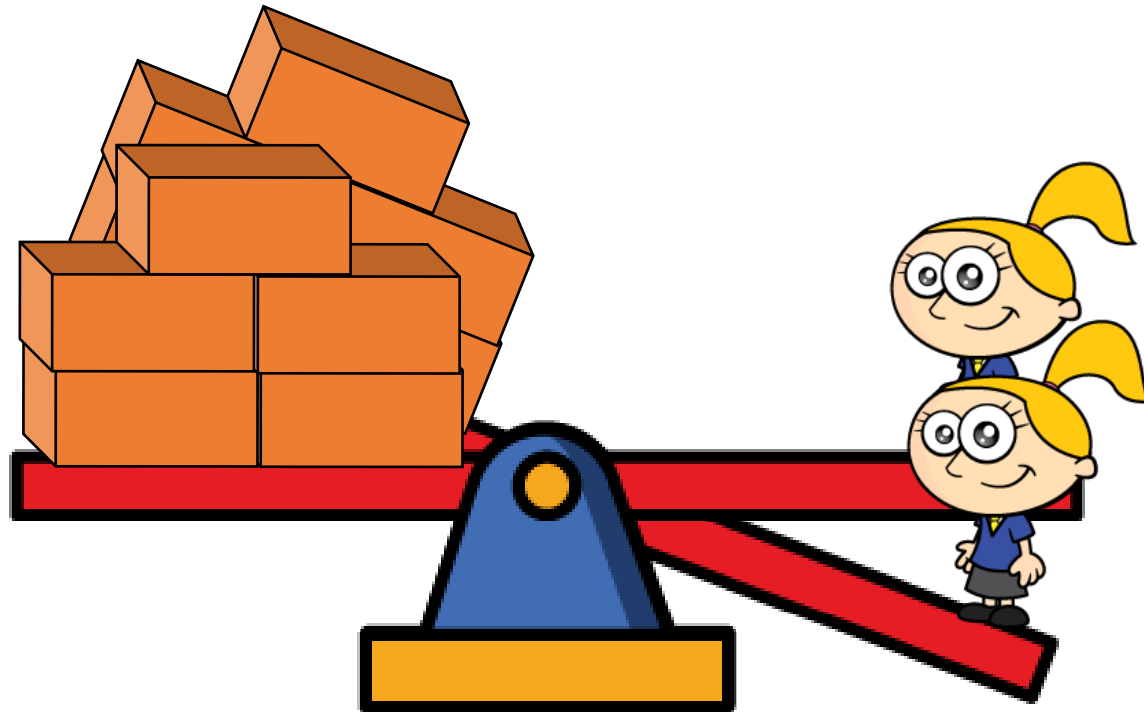
Eva is 1 block.

How many blocks will balance Eva?

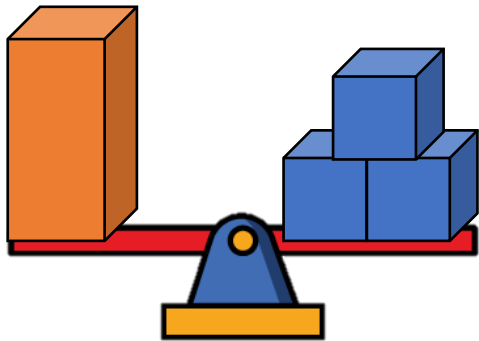


Eva is heavier than 2 blocks.

How many blocks will balance Eva?



Eva has a mass of 5 blocks.

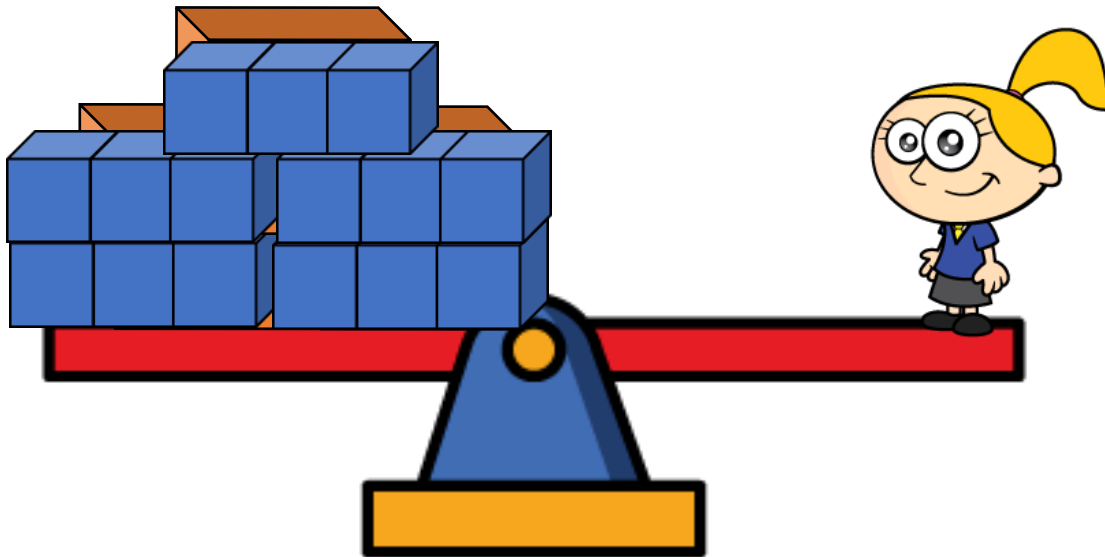


Have a think



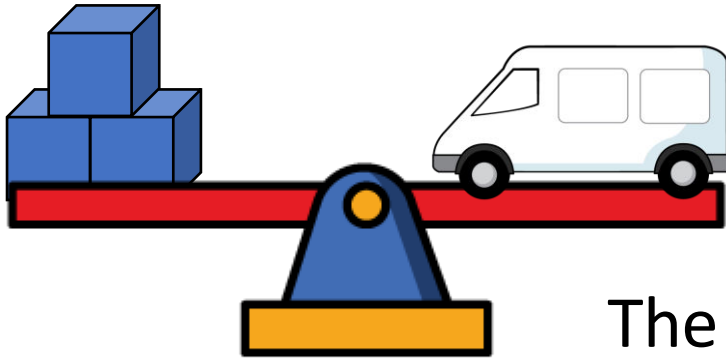
15 blue cubes will balance Eva.

How many blue cubes will balance Eva?

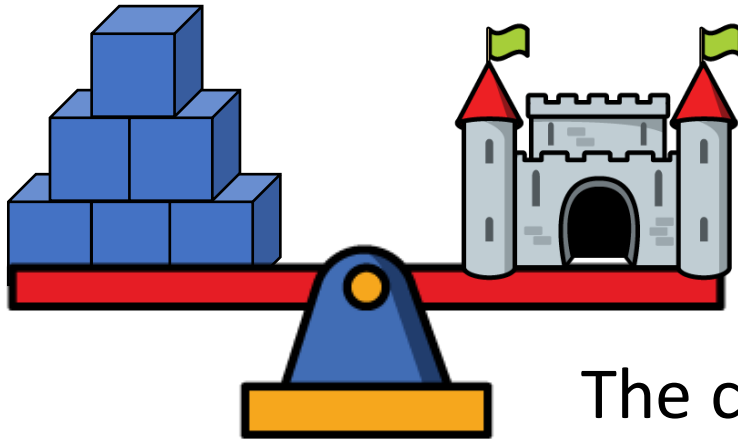


Which is heavier the van or the castle?

Have a think



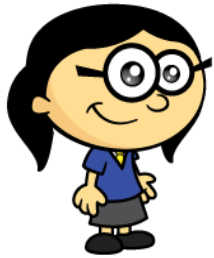
The van has a mass of 3 cubes.



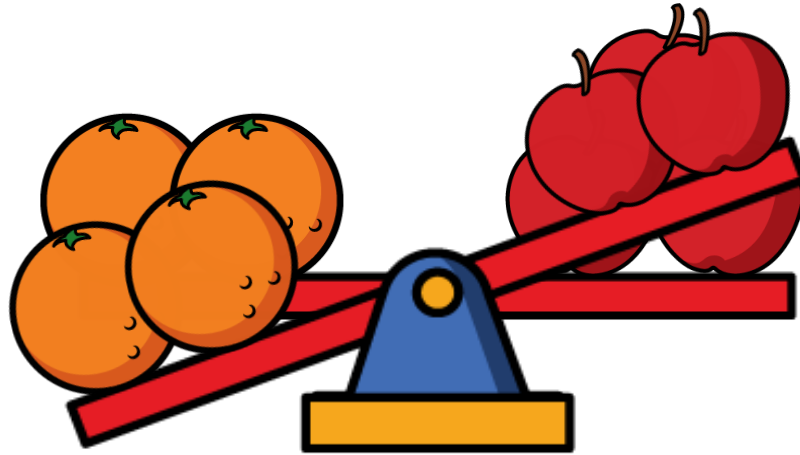
The castle has a mass of 6 cubes.

The castle is heavier than the van.

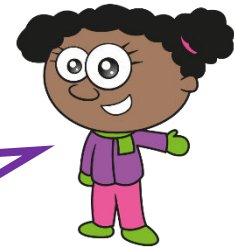
Which is heavier one orange or one apple?



One orange is heavier. It takes more apples to balance the oranges.



I think that one and a half apples would balance one orange.



Have a think



YOUR TURN

Have a go at the rest of
the questions on the
worksheet

