

# MEASURE MASS (2)

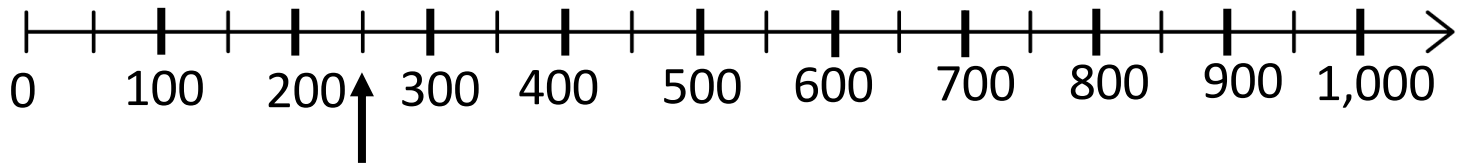
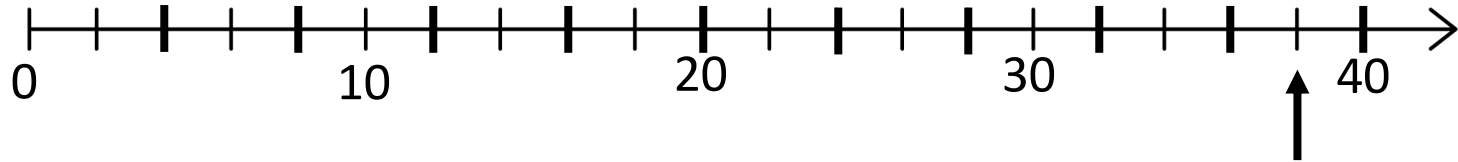


**GET READY**

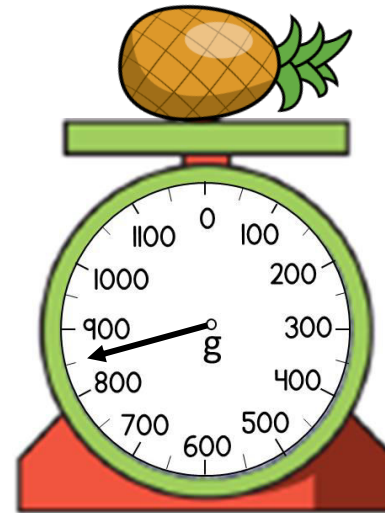


1) How many grams are there in 1 kilogram?

2) What number is indicated by each arrow?



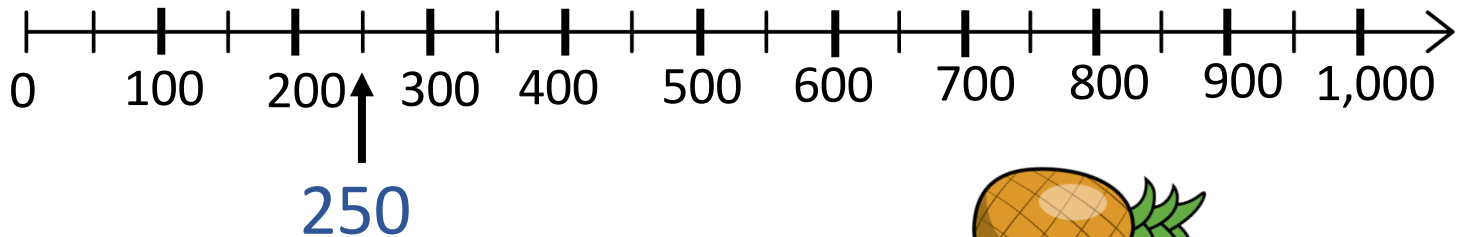
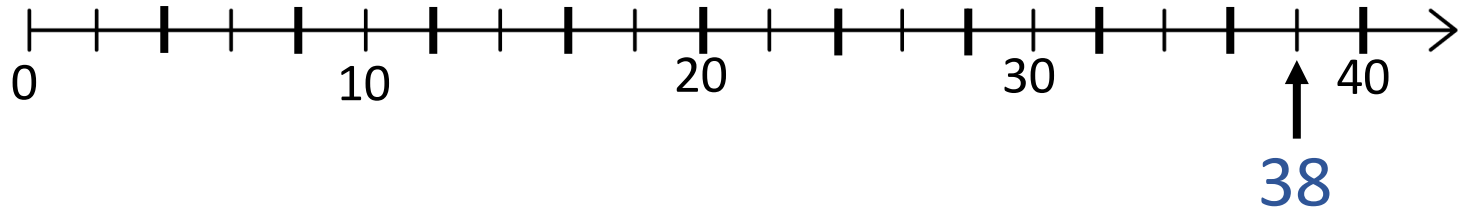
3) What is the mass of the pineapple?



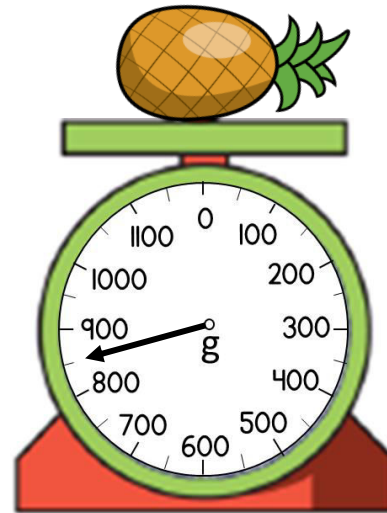
1) How many grams are there in 1 kilogram?

kilo means 1000 so  $1 \text{ kg} = 1000 \text{ g}$

2) What number is indicated by each arrow?



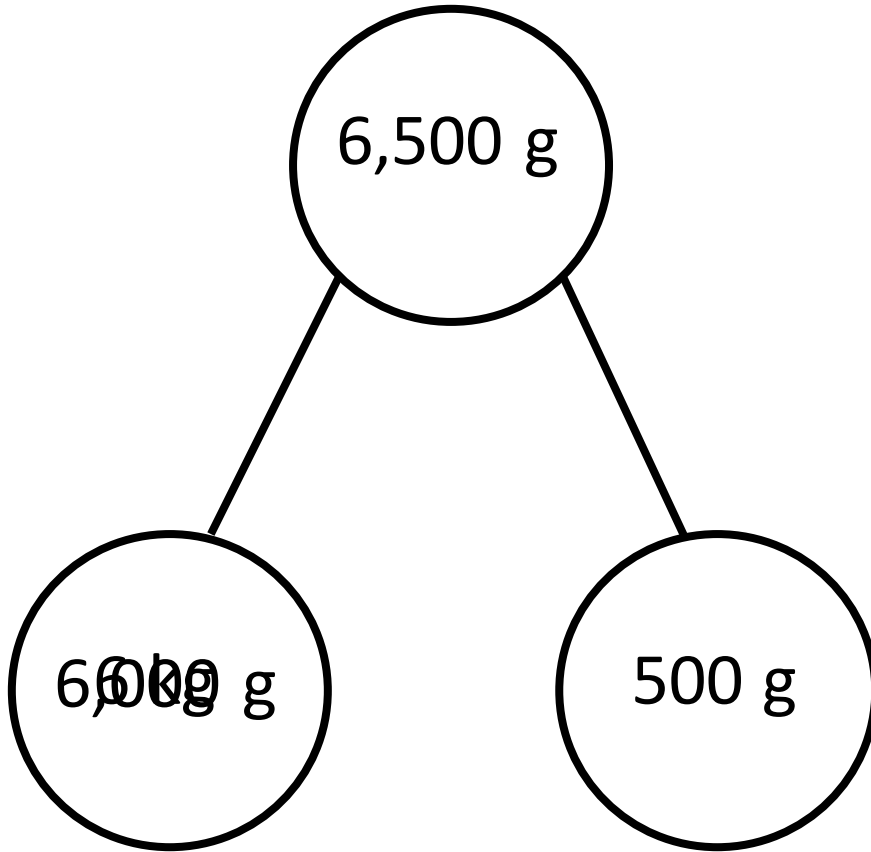
3) What is the mass of the pineapple?  $850 \text{ g}$



LET'S LEARN



$$\underline{6,500} \text{ g} = 6 \text{ kg and } 500 \text{ g}$$



$$1 \text{ kg} = 1,000 \text{ g}$$

$$6,000 \text{ g} + 500 \text{ g} = 6,500 \text{ g}$$

$$1 \text{ kg} = 1,000 \text{ g}$$

Have a think



$$1) 5 \text{ kg} = \underline{5,000} \text{ g}$$

$$2) 12,000 \text{ g} = \underline{12} \text{ kg}$$

$$3) \underline{2,200} \text{ g} = 2 \text{ kg and } 200 \text{ g}$$

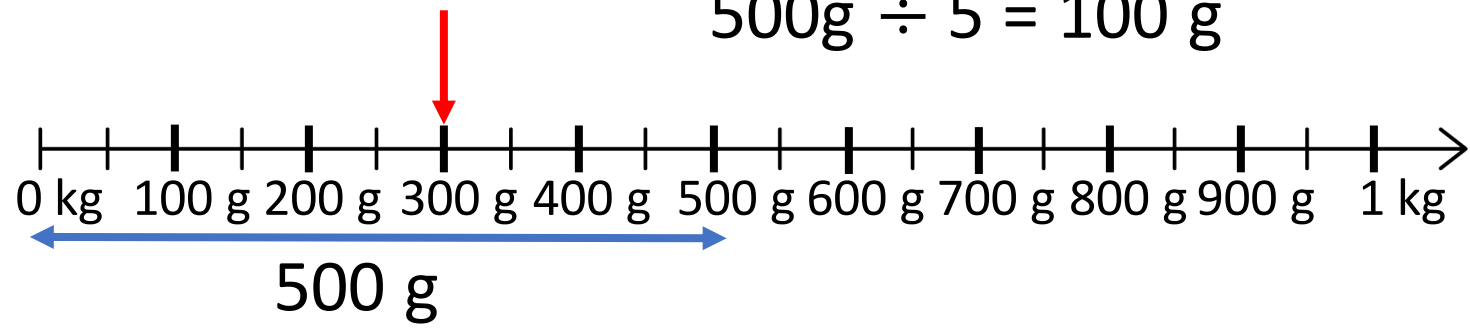
$$4) 8,100 \text{ g} = \underline{8} \text{ kg and } \underline{100} \text{ g}$$



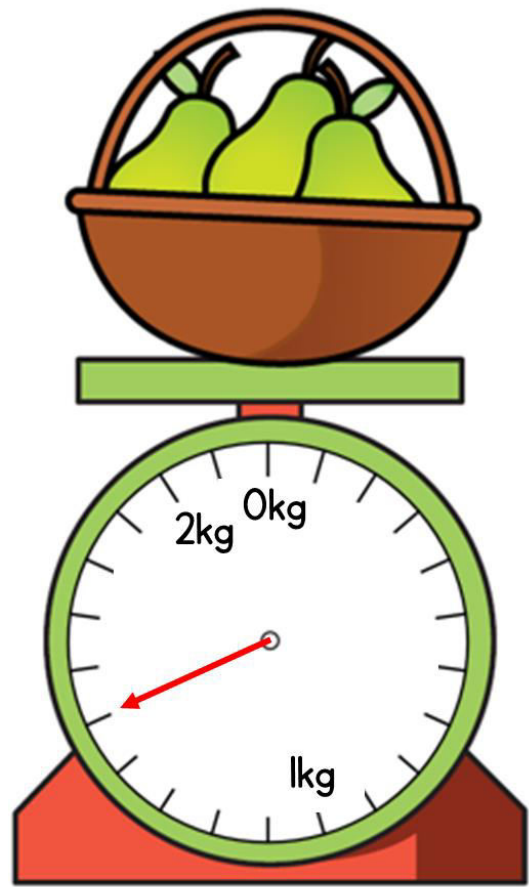
What is the mass of the football?

The football has a mass of 300 g

$$500\text{g} \div 5 = 100\text{ g}$$



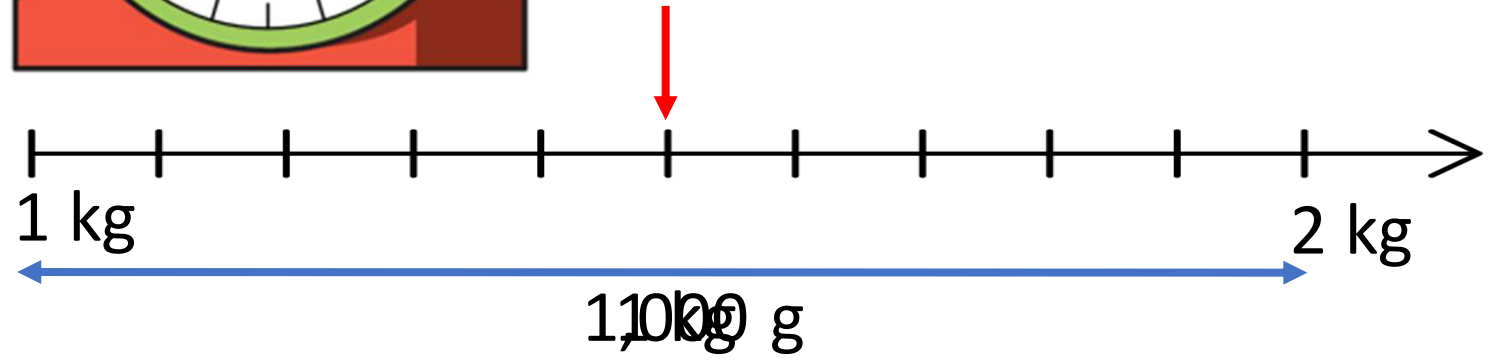




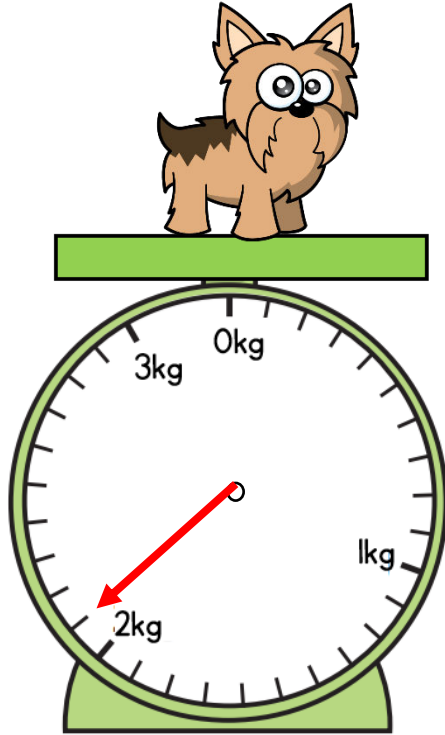
What is the mass of the basket of pears?

1 kg and 500 g

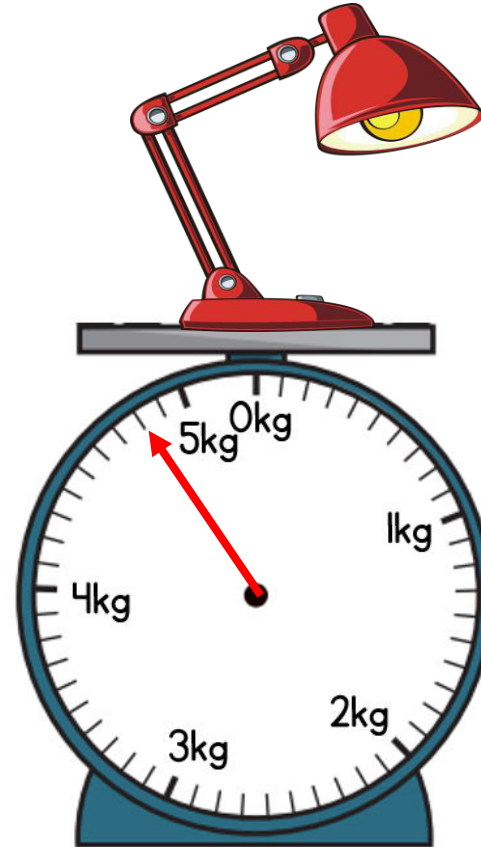
$$1,000 \text{ g} \div 10 = 100 \text{ g}$$



Have a think



2 kg and 100 g



4 kg and 800 g

**YOUR TURN**

Have a go at questions 1  
and 2 on the worksheet



What is the mass of the pumpkin?

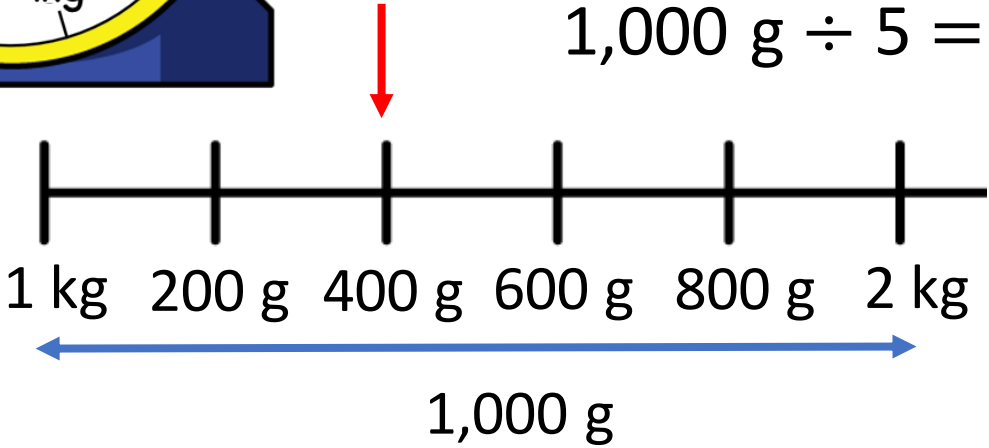


I think it's 1 kg and 200 g

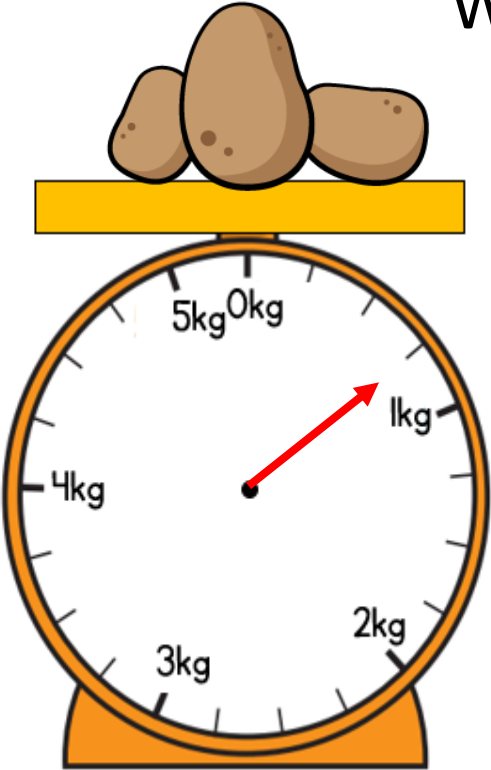


1 kg and 400g

$$1,000 \text{ g} \div 5 = 200 \text{ g}$$

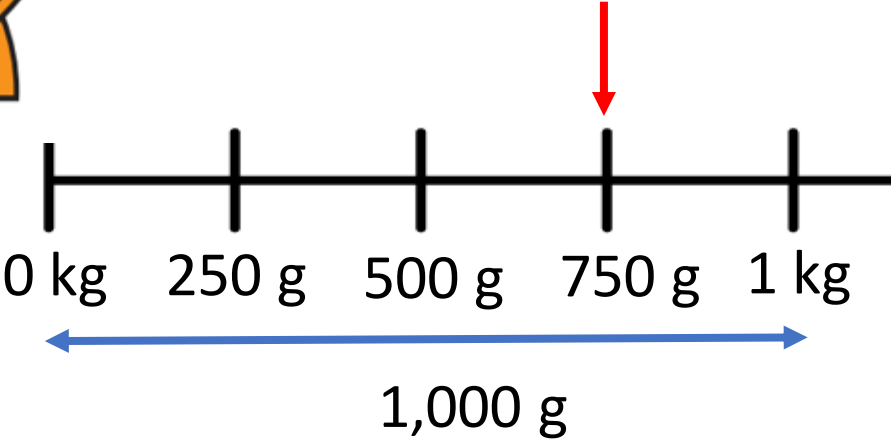


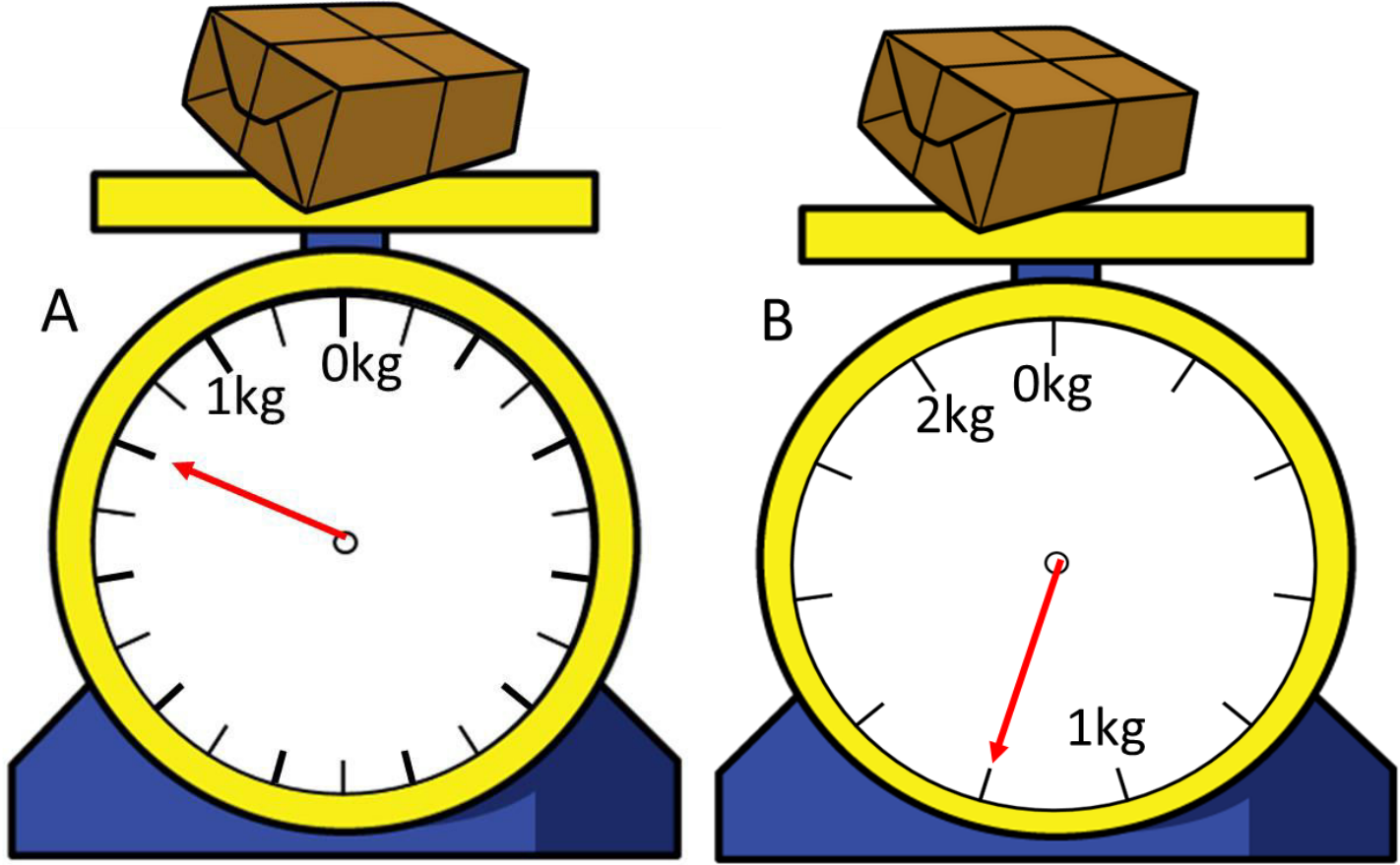
What is the mass of the potatoes?



750g

$$1,000 \text{ g} \div 4 = 250 \text{ g}$$





Which parcel has the greater mass? **B**

**YOUR TURN**

Have a go at the rest of  
the questions on the  
worksheet

