

Heaton St. Barnabas' CE (VA) Primary School

Policy For

Adverse Weather
Procedures

Position: Chair of Staffing & Finance Committee

Heaton St Barnabas' Primary School

Adverse Weather Conditions & Snow/Ice procedure policy

Information for parents and carers

Deteriorating Weather Conditions during the School Day

Our policy is never to close school during the course of a school day wherever possible. However, in extreme circumstances school does have to close due to severe weather conditions. Where these circumstances arise a text will be sent to all parents and child-minders advising them to make arrangements for their child(ren) to be collected.

Parents having difficulties in collecting their child(ren) should contact the school and let them know what alternative arrangements have been made.

Heavy Overnight Snow

There are times when the weather is so severe e.g. very heavy snowfall, that it is considered that the health and safety of pupils and staff are best served by closing the school.

If there has been a heavy fall of snow overnight and school is closed, the texting procedure will again be used, informing parents, child-minders, and all staff. Bradford Schools Online will be notified, who will alert local radio & TV stations.

Parents and carers are asked to listen to local radio stations for information regarding school closure.

If there are exceptional severe weather conditions across the district and police are recommending only essential journeys should be made, Bradford Council's children's services department may make a decision to close all schools for pupils. Again, local radio stations will be contacted and parents and carers are kindly asked to adhere to announcements.

Parents can also access information with regard to school closure by searching for the 'Bradford Schools online' website in their search engine.

Parents can have alerts set up through Bradford Schools Online in an email which will let them know about planned and unplanned closure days.

Staffing

All school staff should make every reasonable effort to reach school. Staff must contact the Headteacher or a member of the SLT as soon as is practicable if they foresee difficulties in getting to school before the start of the school day.

If the number of staff reaching school is adequate to cope with the number of pupils who have arrived and if the school is heated, the school will remain open.

This decision will be reached by the Senior Leadership Team if the number of staff present is adequate to allow appropriate supervision.

These pupils should be provided with appropriate work and should be kept at school as long as the physical conditions are satisfactory and staff are available.

School Closure Procedure

If the Senior Leadership team has decided to close the school due to adverse weather conditions, then the following procedure must be put into action:

- **Contact the Chair of Governors.**
- **Contact Bradford Schools Online.**
- **Text service used to parents, child-minders and all staff.**

All Senior Leadership Team are aware of the appropriate procedures to follow.

Snow and Ice Procedure

Please read the following information, as this snow and ice procedure will apply in severe weather conditions. Please refer to the plan of the school site below for snow clearing and gritting routes.

Routes in **GREEN** will always be cleared if there is sufficient manpower and grit available and weather conditions allow.

Routes in **AMBER** will only be cleared after the green routes if there is sufficient manpower and grit available and weather conditions allow.

Routes in **RED** will only be cleared after the green and amber routes if there is sufficient manpower and grit available and weather conditions allow.

In severe conditions, ensure that you enter school via a GREEN ROUTE as these routes are prioritised for clearing and gritting (pupils, parents /carers and visitors must use the pedestrian entrance).

Please note:

The access used by parents through the Church Hall is a secondary access to school. This has historically been used at the request of parents. However, as the school does not have any rights to property outside of its boundaries, it cannot grit and maintain these areas. The school recommends that parents use the main entrance/exit, especially during severe weather conditions. For this reason, at times, due to the severity of the sloped access on the red route (from the Church Hall car park), this access may be closed temporarily, until conditions improve.

Snow may not be cleared from footpaths if grit is in short supply. Green routes will take precedent over amber routes, which will take precedent over red routes.

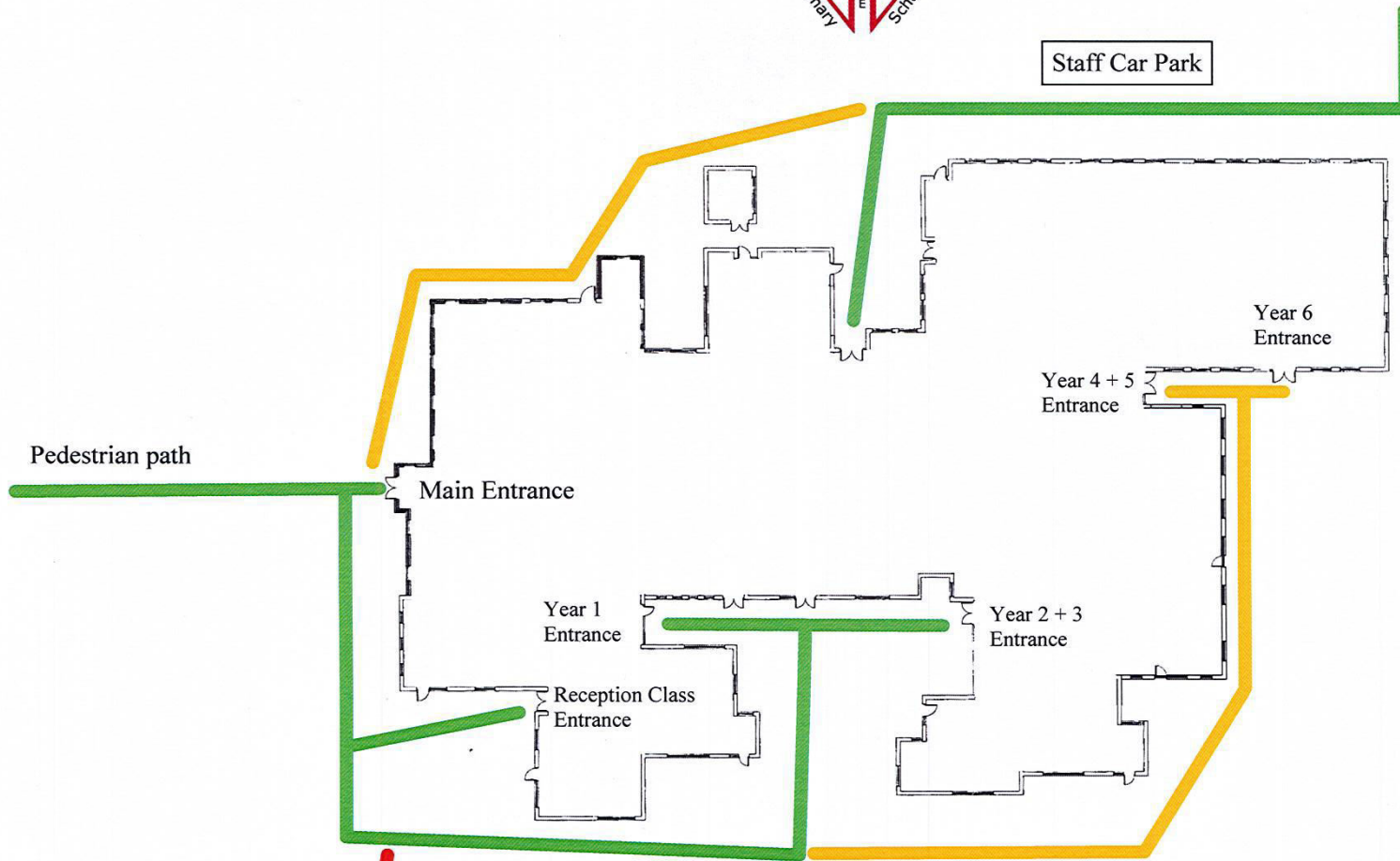
Similarly, green, then amber, then red routes will be prioritised for clearing and gritting in that order if the weather deteriorates to such a degree that not all routes can be maintained.

The car park (other than one accessible parking bay) and playground will not be cleared. Therefore, please ensure that where practicable, non-slip footwear is worn when walking on school grounds.

Temporary signs, cones or tape may be used to indicate unsafe areas, including footpaths, into the school. Please take notice of these signs and remain on the treated route.



Staff Car Park



Pedestrian path

Main Entrance

Year 1 Entrance

Reception Class Entrance

Year 2 + 3 Entrance

Year 4 + 5 Entrance

Year 6 Entrance

To Church Hall

Playground

Football field