

Writing Term 2A






Writing to persuade:

**PERSUASIVE**

**LETTERS**

We are focussing on:

Year 3 Core

	write for both fictional and non-fictional purposes, drawing on their reading to inform the vocabulary and grammar of their writing
	describe settings and characters using expanded noun phrases
	use a range of co-ordinating and subordinating conjunctions
	use adverbs to express time
	use prepositions to express place and time
	use correct tense consistently, including the present perfect tense
	maintain Standard English forms, e.g. using <i>a/an</i> correctly
	begin to use paragraphs to structure writing
	use simple organisational devices (e.g. headings or sub-headings) appropriately
	use the full range of punctuation taught at key stage 1 and in Y3 mostly correctly
	begin to use inverted commas to punctuate speech
	spell most words correctly, adding prefixes and suffixes appropriately, spelling the correct form of homophones and spelling all common exception words correctly (KS1 and Y3)
	use the diagonal and horizontal strokes needed to join some letters
	make simple additions, revisions and proof-reading corrections to their own writing

Monday

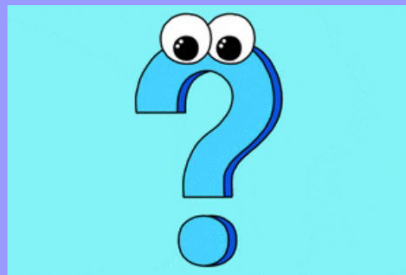
## Daily spelling practice

Writing phase - Session 1

Look at these words. Can you spot which are spelled incorrectly?

woman    questoin    natral    medicine    librery    minute

On your whiteboard, write the correct spelling 5 times.  
Challenge: Write a sentence containing more than one of the words.



## Writing phase - Session 1

*Here are some questions.*

*Try to change them into commands.*

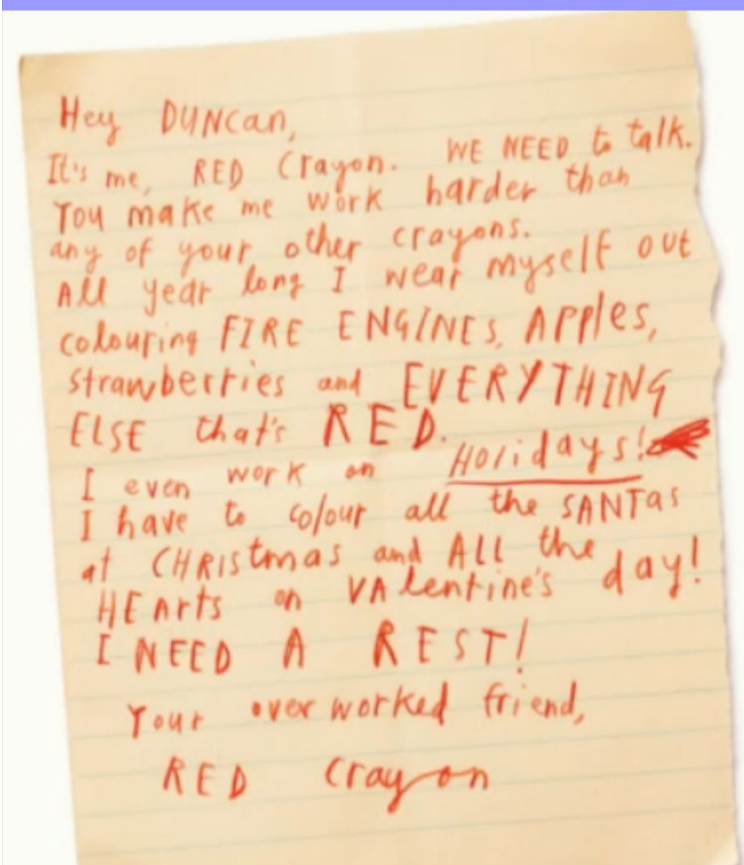
Please can you give me that book?

Can you hold this for me please?

Can you clean your room please?

Can you put your book down please?

## Writing phase - Session 1



Let's remind ourselves:  
Why did Red Crayon quit?



## Writing phase - Session 1

Do you have any objects at home that are tired or overworked because you use them so much?

Let me introduce you to my object:



You wear me every day and walk for miles and miles.

I need a break! Don't you have any other shoes you can wear?

## Writing phase - Session 1

You are going to imagine you are my trainers. You need to think of what my trainers might say in a letter to me. Use the planning sheet and Red Crayon's letter to help.





Tuesday

## Daily spelling practice

Writing phase - Session 2

Look at these words. Can you spot which are spelled incorrectly?

century certain difficult probably varios callendar

On your whiteboard, write the correct spelling 5 times.  
Challenge: Write a sentence containing more than one of the words.



## Writing phase - Session 2

### Model making innovations to the text

Hi DUNCAN,  
me, RED Crayon. WE NEED to talk.  
I make me work harder than  
of your other crayons.  
A year long I wear myself out  
colouring FIRE ENGINES, APPLES,  
strawberries and EVERYTHING  
ELSE that's RED.  
even work on Holidays!  
have to colour all the SANTAS  
+ CHRISTMAS and ALL the  
HEARTS on VALENTINE'S day!  
I NEED A REST!  
Your overworked friend,  
RED Crayon

Hi Miss B,  
It's me, your old trainers. We  
need to talk. You make me  
walk further than any of your  
other shoes.

All year long...

## Writing phase - Session 2

In English books, write your own letter from the trainers to Miss B.

Use your planning sheet and Red Crayon's letter to help.

WALT	Writing a persuasive letter (innovate)
B	With support, use some features of letter
R	Use most features of letter and mainly accurate punctuation
Y	Use all the features of a persuasive letter: <input type="checkbox"/> 2 <sup>nd</sup> person <input type="checkbox"/> Questions <input type="checkbox"/> Commands <input type="checkbox"/> Adjectives to describe feelings <input type="checkbox"/> Exaggeration <input type="checkbox"/> Opinion and reasons <input type="checkbox"/> Warning <input type="checkbox"/> Paragraphs
G	Show the character and entertain the reader in the style of Drew Daywalt

Wednesday

## Daily spelling practice

Writing phase - Session 3

Look at these words. Can you spot which are spelled incorrectly?

increse possible island hart preschure reign

On your whiteboard, write the correct spelling 5 times.  
Challenge: Write a sentence containing more than one of the words.



## Writing phase - Session 3

Today we are going to edit our letters.

When we edit, where might the errors be?

## Writing phase - Session 3

Today we are going to edit our letters.

When we edit, where might the errors be?

Capital letters and . ? !

Paragraphs - you need to use them!

Spelling

Grammar - does it make sense?

Missing words - read through and check



Thursday

## Daily spelling practice

Writing phase - Session 4

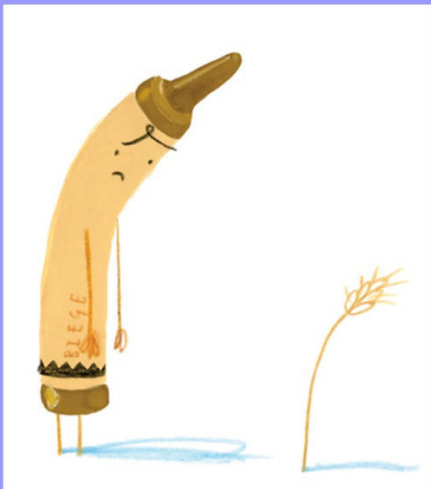
Look at these words. Can you spot which are spelled incorrectly?

immagine fruit history arrive beleive perpose

On your whiteboard, write the correct spelling 5 times.  
Challenge: Write a sentence containing more than one of the words.

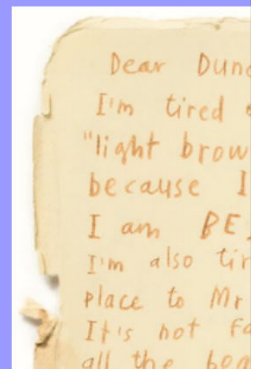


## Writing phase - Session 4



Can you remember why Beige Crayon wrote a letter to Duncan?

How did he feel? What did he want Duncan to do?



Writing phase - Session 4

Do you have any objects at home that feel left out and lonely? Talk in pairs.



What might the board game be feeling?

Dear Miss Britchford,

Listen up! I'm your incredibly lonely, distraught board game. Do you even remember me? Do you know how it feels to be forgotten about and left on a shelf?

I feel so unloved because you never play with me any more. I am the saddest, most unwanted toy in the whole world!

I think you should play with me because I am much more fun than watching boring, old television.

If you keep ignoring me, I will fall off the shelf and hit you on the head.

Your miserable friend,  
Old Board Game.

Writing phase - Session 4

You need to create your own character for your hot write. Why are they angry with you? What do they feel? What are they threatening to do?

Use the planning sheet to note your ideas.

